

Social Emotional Learning



KPBSD Worksession
March 3, 2020
Melissa Linton and Leslie Fazio

HOPE, HELP, STRENGTH



KPBSD's approach: Core Four with a Heart!

Flexible Content
and Tools



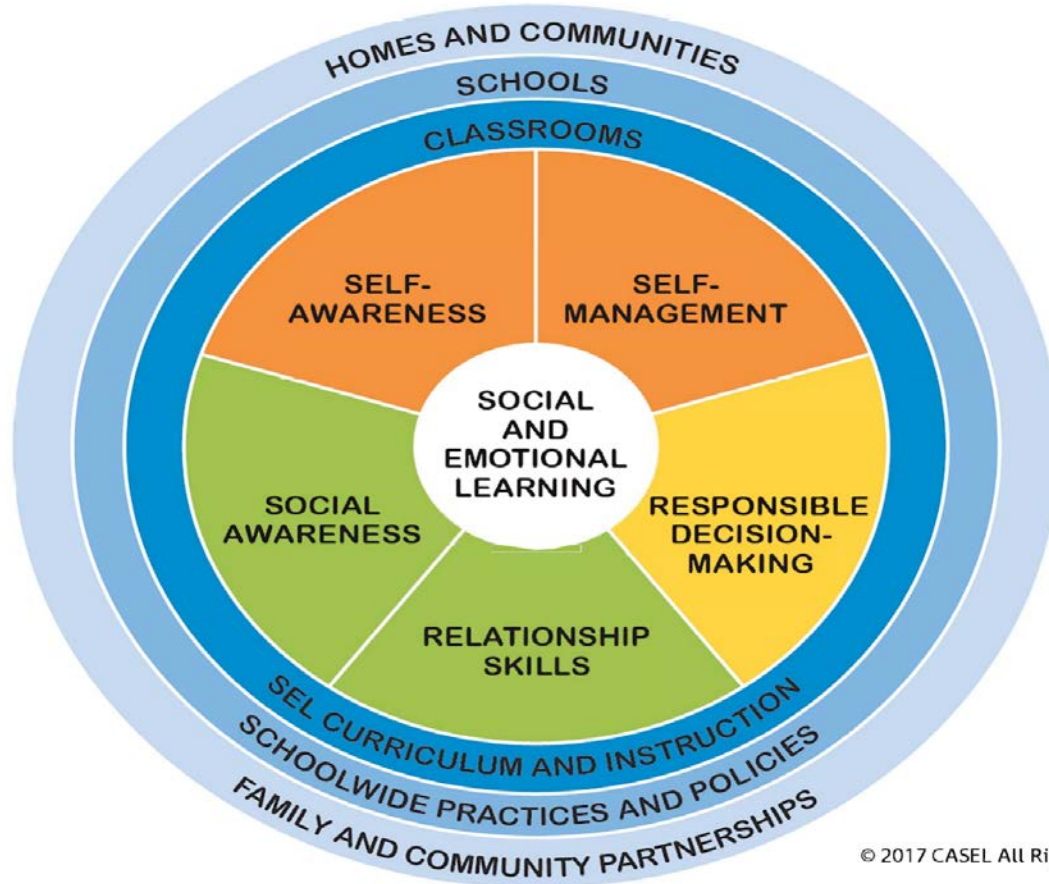
Targeted
Instruction

SEL at the
center!

Student Reflection
and Ownership

Data-Driven
Decisions

CASEL SEL Framework



SEL and the Core Four

Flexible content and tools ensure that the materials and **environment** meet students' **social and cultural needs**, affording opportunities to build **social awareness**.

Student Reflection supports student **self-awareness**, including recognition of strengths and growth areas. **Ownership** ensures that students practice **self-management**; they own their learning by setting and working toward **personal and academic goals**.



Flexible Content and Tools

Instructional materials allow for differentiated path, pace, and performance tasks



Targeted Instruction

Instruction aligns to specific student needs and learning goals



Student Reflection and Ownership

Ongoing student reflection promotes ownership of learning



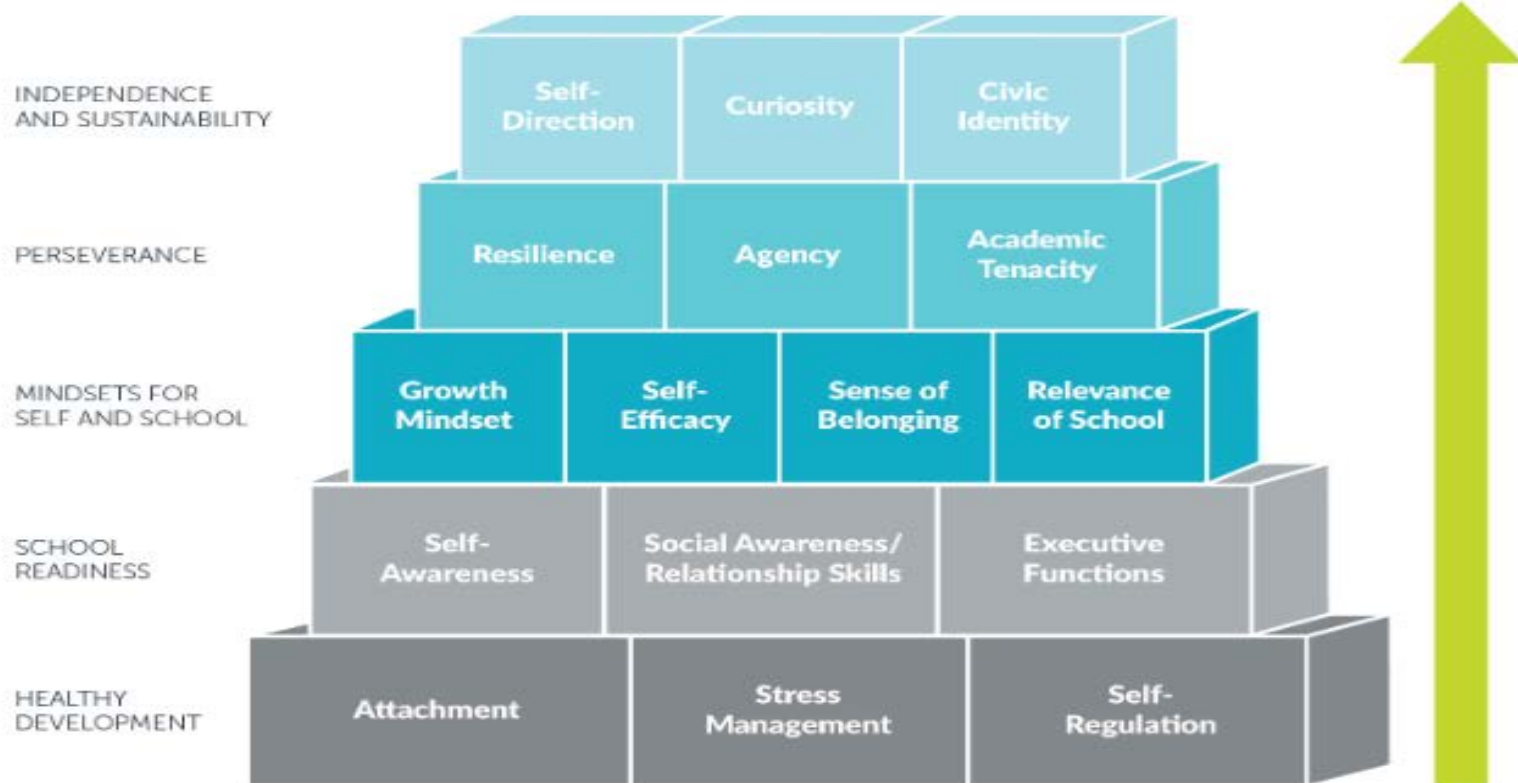
Data Driven Decisions

Frequent data collection informs instructional decisions and groupings

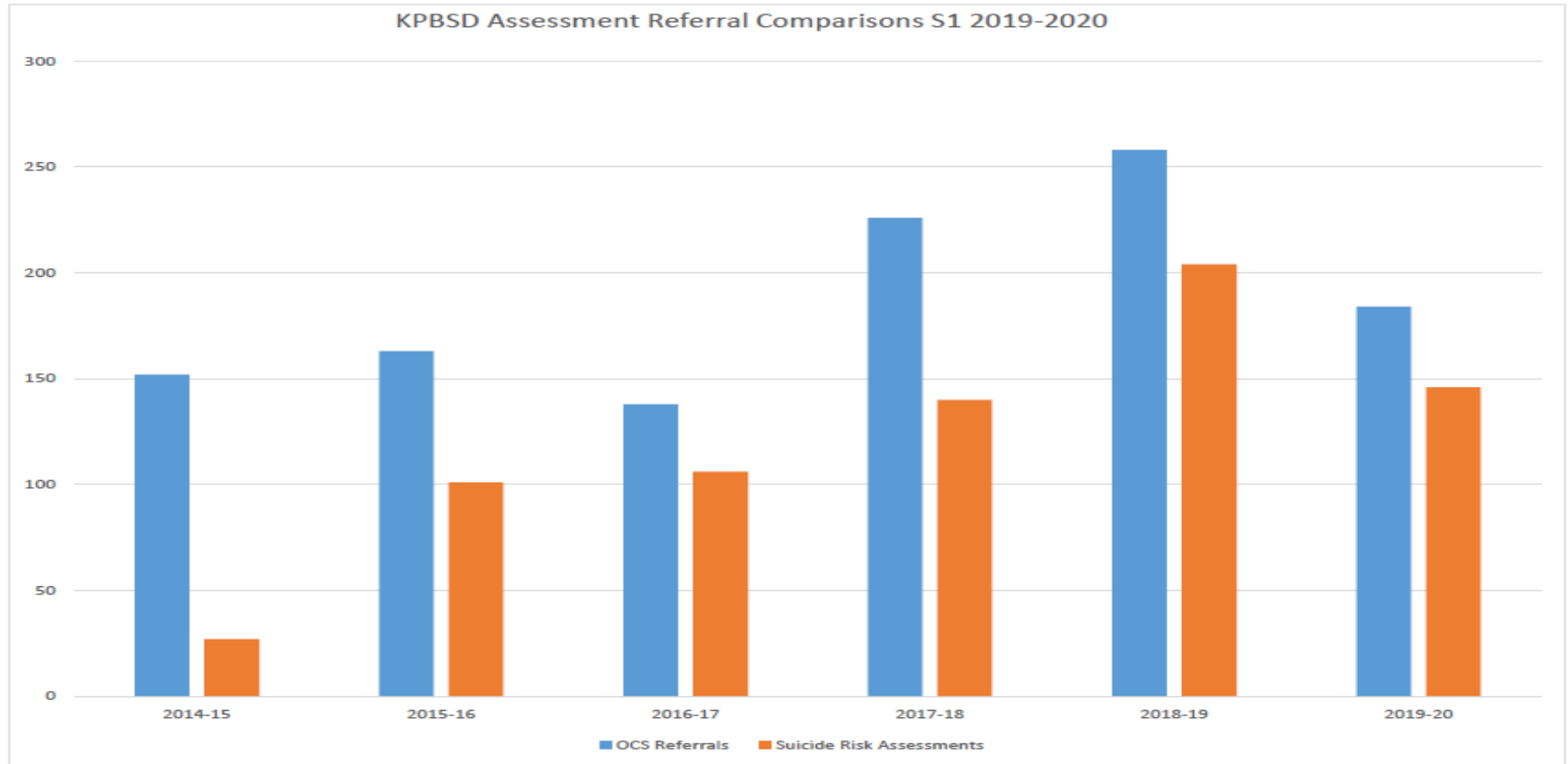
Targeted instruction means that students are operating at their zone of proximal development, which supports **self-awareness**. **Intentional grouping by skill level or interest area** requires students to collaborate with peers, building their **relationship skills**.

Data-driven decisions support the development of a student data culture, providing **students an opportunity to use their data** to map out next steps in their learning and **make responsible decisions**.

BUILDING BLOCKS FOR LEARNING

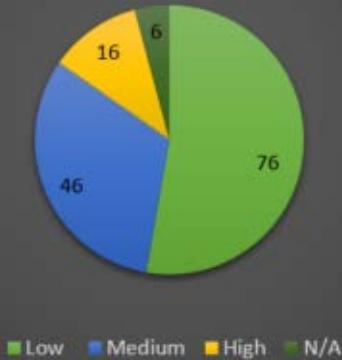


KPBSD SUICIDE RISK ASSESSMENTS

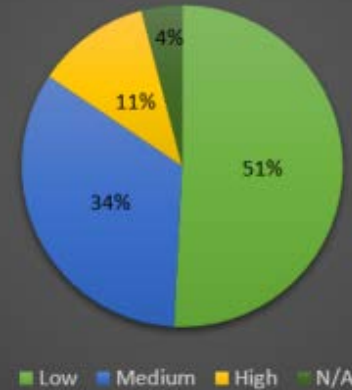


KPBSD SUICIDE RISK ASSESSMENTS LEVEL OF THREAT

2018-2019
Threat Assessment Level

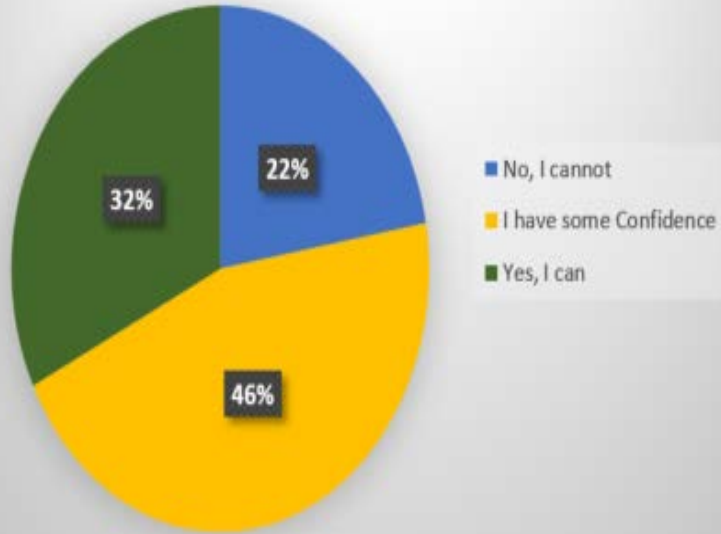


2019-2020
Threat Assessments Level

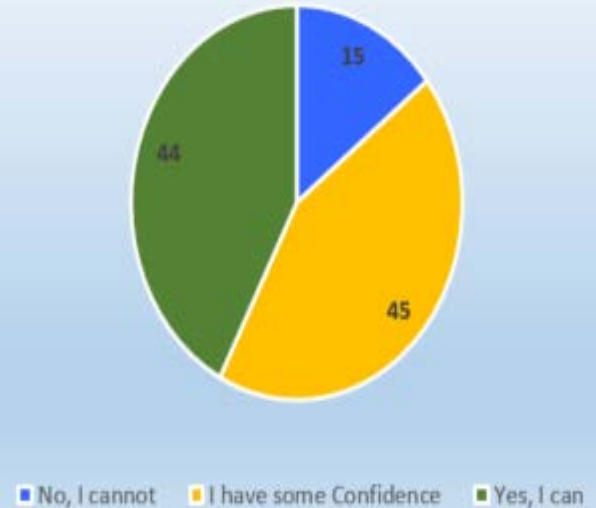


KPBSD GRADES 6-12 HANOVER SURVEY


Confidence in ability to describe feelings



Confidence in ability to manage stress



EXAMPLES OF KPBSD STAFF TRAINING & PROFESSIONAL DEVELOPMENT

- ❖ KPBSD Core Curriculum Professional Development
 - ❖ Youth Mental Health First Aid
 - ❖ Sources of Strength
 - ❖ The Great Body Shop
 - ❖ Fourth R and Fourth R Plus
 - ❖ Mandt Training and Fetal Alcohol Syndrome Disorder (FASD)
 - ❖ Life Space Crisis Intervention Training
 - ❖ Mind Up Training
 - ❖ Restorative Practices
 - ❖ Trauma Informed Strategies for Teachers and Paraprofessionals
- 

KPBSD TIERED LEVEL OF SUPPORTS



- ❖ Positive Behavioral Intervention Supports (PBIS)
- ❖ Interventionists
- ❖ Special Education Behavioral Programs
 - ❖ Stages, Foundations, and Frameworks
- ❖ Social Skills Training for Targeted Student Needs

EXAMPLES OF KPBSD CURRICULUM

- ❖ Youth Mental Health First Aid
- ❖ Fourth R and Fourth R Plus
- ❖ Sources of Strength
- ❖ Common Sense Media
- ❖ Great Body Shop
- ❖ PBIS



GRANTS TO SUPPORT THE WORK

- ❖ GCI Community Grants
- ❖ GCI Suicide Prevention Grants
- ❖ Suicide Pre and Postvention Grants (SAPP)
- ❖ Project Aware Grant
- ❖ Title IV



BEHAVIORAL HEALTH AGENCY PARTNERS



- ❖ Central Peninsula Hospital
- ❖ Peninsula Community Health Services
- ❖ Seaview Community Services
- ❖ Kenaitze Indian Tribe (Na'ini Family and Social Services)
- ❖ Ninilchik Tribal Council Health Services/Community Outreach
- ❖ Chugachmiut Behavioral Health
- ❖ South Peninsula Behavioral Health Services (The Center)
- ❖ Seldovia Village Tribal Clinic
- ❖ University of Alaska, Anchorage Center for Human Development/Office of Children's Services
- ❖ Boys and Girls Clubs
- ❖ Head Start and other Early Childhood Programs
- ❖ Frontier Community Services and Infant Learning Program
- ❖ Kenai Police Department
- ❖ Department of Juvenile Justice
- ❖ REC Room
- ❖ Sprout Family Services
- ❖ Project Grad
- ❖ And more....

KPBSD AGENCY PARTNERS

- ❖ **Office of Children's Services**
- ❖ **Boys and Girls Clubs**
- ❖ **Head Start and other Early Childhood Programs**
- ❖ **Frontier Community Services and Infant Learning Program**
- ❖ **Kenai Police Department**
- ❖ **Department of Juvenile Justice**
- ❖ **REC Room**
- ❖ **Sprout Family Services**
- ❖ **Project Grad**



COMMUNITY RESOURCES

- ❖ Lee Shore Center
- ❖ Love INC, of the Kenai Peninsula
- ❖ Mobilizing for Action through Planning and Partnership (MAPP Coalition)
- ❖ Kenai Peninsula Community Care Center
- ❖ The Food Bank
- ❖ Kenai Job Center and Public Assistance

**Please go to Board Docs for a comprehensive list.*



QUESTIONS?



The mission of the Kenai Peninsula Borough School District is to empower all learners to positively shape their futures.