

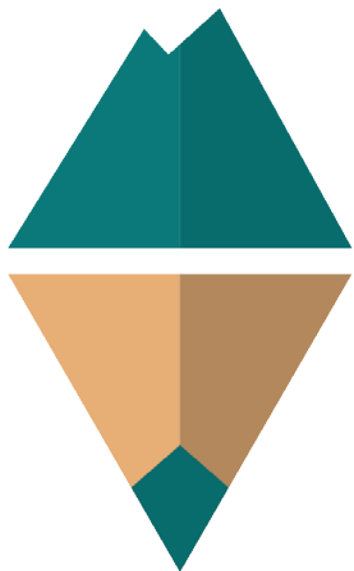
# Connections

[home.school.community](http://home.school.community)

School Board Presentation  
February 1, 2021

# School Board Appreciation Month





# Connections

[home.school.community](http://home.school.community)

# Remote Learning IS NOT Homeschooling

## Remote Learning

- ▶ Teacher/School sets schedule
- ▶ Teacher chooses materials
- ▶ Teacher/school defines success

## Homeschooling

- ▶ Family sets schedule
- ▶ Parents choose materials
- ▶ Parents define success

# Who Drives the Bus?

## Remote Learning

- ▶ Teacher/School

## Homeschooling

- ▶ Parents/Family





# Curricular Choice



**Aunt Phil's Trunk**

*Award-Winning  
Alaska Adventure Stories*



# Life as Curriculum



# Social Emotional Learning



# What Does Homeschooling Look Like?









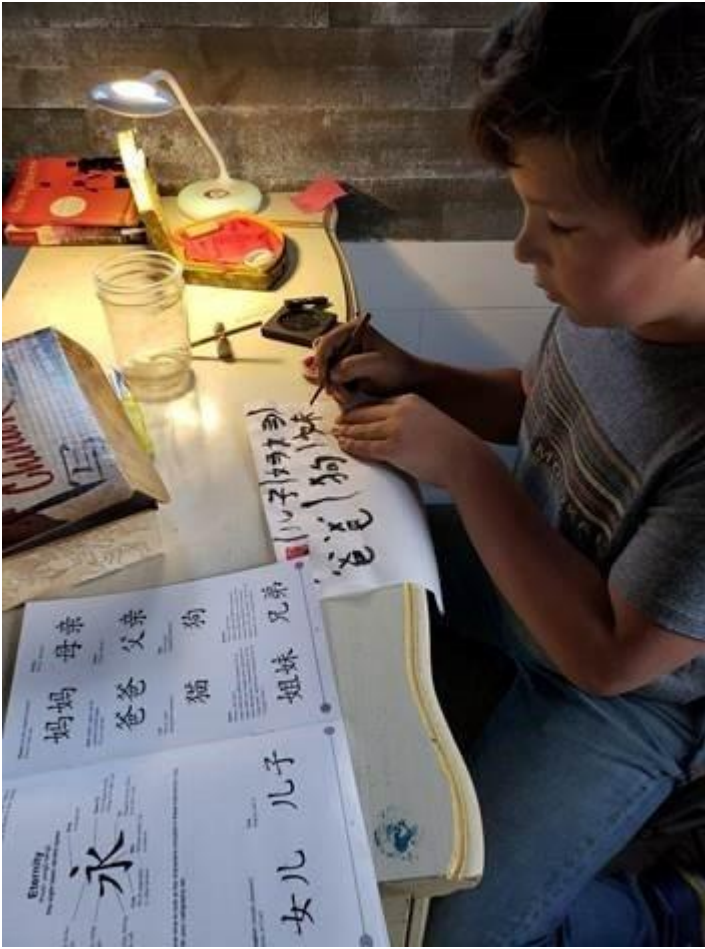














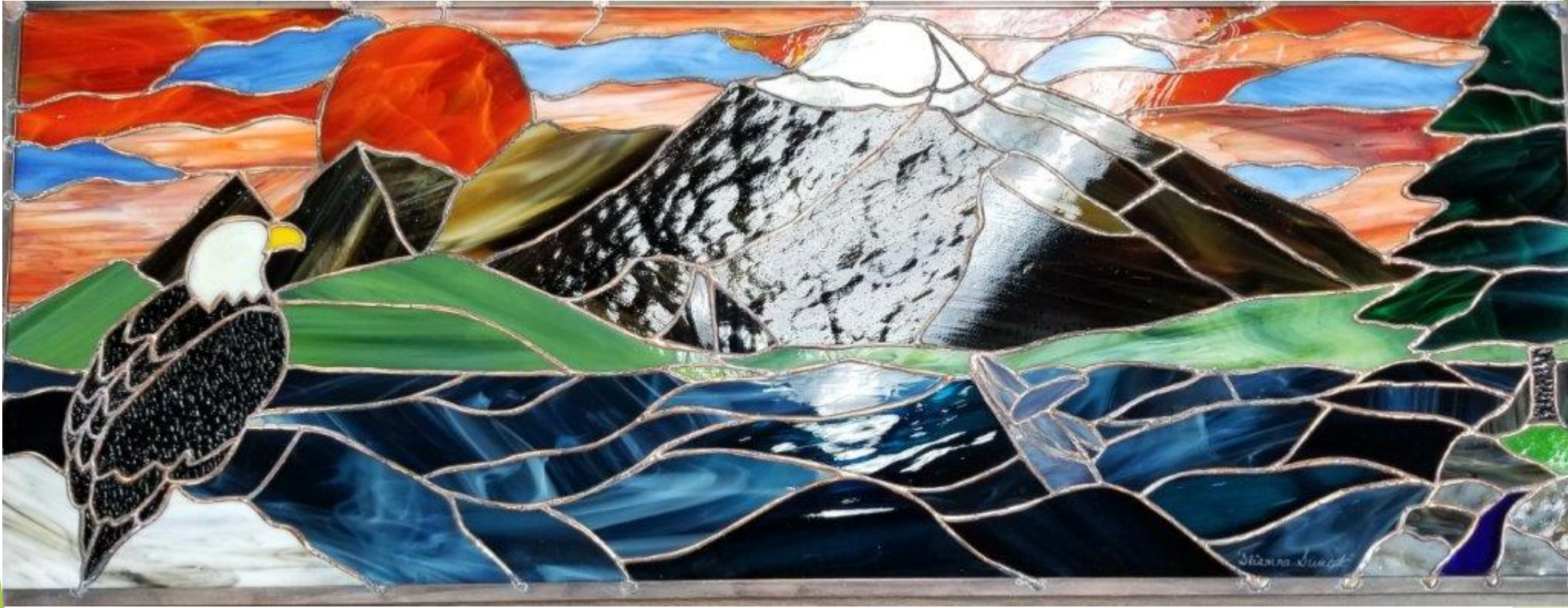


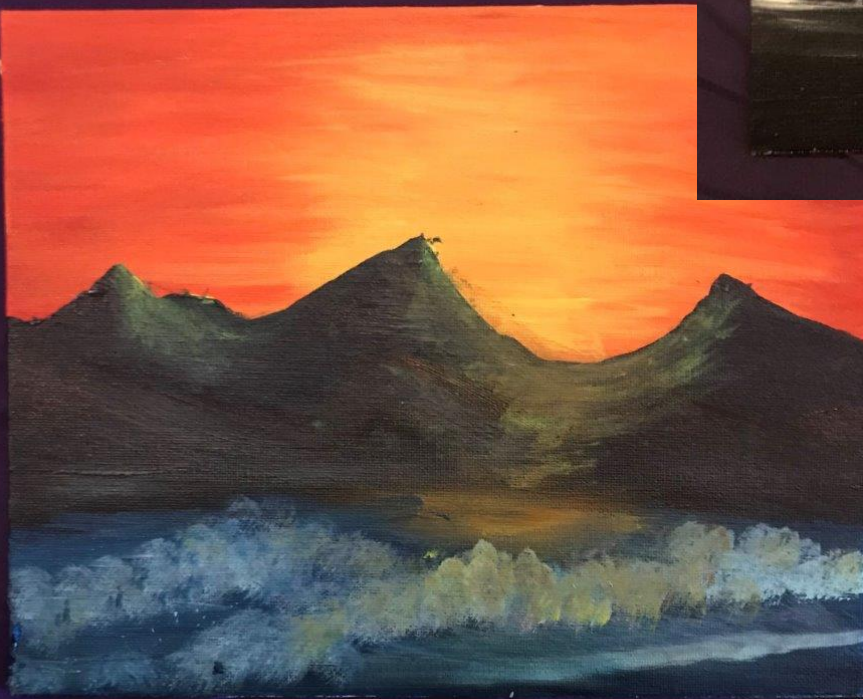














# Some Numbers Enrollments on January 15

2019-2020

- ▶ 875
- ▶ 9.9% of KPBSD Student

2020-2021

- ▶ 1,777
- ▶ ~22% of KPBSD Students

# This is what busy looks like...

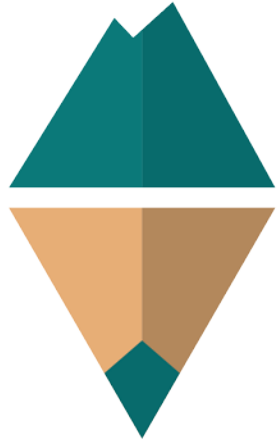
Kellie-OFFIC New Student-An	Reubin - PHONE 8th, Mary and	Wendi IN OFFICE new Julie Nichols	Kelli-Erica Johnson	Mark - OFFICE Helena	Reubin-Nelson 907-317-	Wendi IN OFFICE	Kellie & Jamie New	Mark/Ja - Teresa Claudia	Reubin-l Erwin	Wendi-Angel Rogers	Kelli - Rachel is mom	Mark IN OFFICE new 9th	Reubin - Amy Blum/m	Wendi PHONE APPT	Kellie PHONE Gran Tamera	Mark - IN OFFICE Aaron &	Reubin IN OFFICE re-enroll			
Kellie-Pt New Student-	Mark-Re & Sarah Coon	Reubin - Re-enrol	Wendi-OFFICE Curry	Kellie-Of New Student-	Mark IN OFFICE new	Reubin - RE enroll	Wendi - Rainee 907-252-	Kellie-Pt New Students	Mark,OF Dad-Jody	Reubin-! Baker -enroll	Wendi -PHONE Carla	Jamie -Sped PD Porta	Kellie-N Students & Rylie	Reubin PHONE APPT	Wendi - Shawan Card	Kellie-N Student- (Amandi	Mark and Julie Nicl	Ruebin, PHONE, Gray	Wendi PHONE APPT	
Jamie IEP-Tia Teeluk	Mark - OFFICE Amy re	Reubin-Ronnie Whicker	Wendi new 4, 6, and	Kellie PHONE APPT	Mark-Rainee 907-252-	Reubin - PHONE	Wendi/J new 6th Julie Nicl	Mark-Hillary Seyler 8th Jacob Katzenb	Kellie-IN OFFICE New	Reubin - Jill Sorhus	Wendi - Oneida Freeman	Mark, mom-Meliss Smith,	Reubin PHONE APPT Jason	Wendi- IN HOUSE Samantha	Kelli - PHOI	Kelli Hele Raid	Mark Morr Mela	Reut Re Enro	Wen - Mich	Jami
Kellie-IN PERSON Victor	Mark-N Student-Adeline	Reubin new 10th	Wendi new 8th Megan	Mark - Kyanna German	NO SHOW Kellie	Reubin PHONE APPT	Wendi-Shamara Claudia	Kellie-Pt New Student-	Mark - Caleb and	Reubin IN OFFICE	Kellie new 2nd	Mark - OFFICE-Lily	Reubin - Jinny Plascenc	Wendi- Jessica Faircloth	Kellie-PHONE Tanisha	Mark PHONE new	Reubin - PHONE	Wendi-C Olfon 7th		
Mark -OFFICE Enroll (3) Angelina	Kellie-PHONE Reenroll	Reubin - PHONE	Wendi new 6th Ceth	Kellie-Of New Student-	Mark reenroll Nika	Reubin - PHONE	Wendi new 7th Carly	Kellie-N Student-Kaiser	Mark - Casey Schmelz	Reubin-Grossel PHONE	Wendi-Emily Reid	Mark, IN OFFICE.	NO Show Kellie	Reubin, PHONE -	Wendi-Janice Stormer	Kellie-Tamara Nelson	Mark -IN OFFICE	Reubin-l OFFICE Reenroll	Wendi - IN OFFICE	
	Kellie-Of New Student-	Reubin IN OFFICE	Wendi new 5th Kenneth	Kellie-Pt New Students	Mark OFFICE reenroll	Reubin IN OFFICE	Wendi new 4th Julie Nicl	Kellie-N Student-Rucker	Mark IN OFFICE new 9th	Reubin PHONE APPT	Wendi PHONE new 3rd	Kelli-In OFFICE new	Mark, Mom-St: son,	Reubin - Dulce Santana	Wendi PHONE APPT	Kelli - Vasilis Maelk	Mark - PHON	Reubin IN OFFICI	Wendi new 7th	Jamie
Kellie IN OFFICE new	Mark-IN OFFICE Lincoln	Reubin - Luella Yeziarsk	Wendi PHONE new 4th	Kellie PHONE new 3rd Silas	Mark-Cessar Mariscal	Wendi - Koleen Wittmer 1st	Kellie-Stude Thomj	Mark - IN OFFICI	Reubin - Daedr:	Kelli - PHON APPT	Wendi - Lunch	Kellie PHONE APPT	Mark PHONE APPT	resched: Wendi-IN	Reubin IN OFFICE	Kellie-Audrey Slat	Mark - Kevin Denney	Reubin, PHONE Mom/St	Wendi - Carrie 907-394-	
				Kellie- Lisa Peterson phone call																

# Curriculum & Supplies



# Relief

- ▶ Additional teacher/advisors in the Soldotna office.
- ▶ Seward advisor went from ½ time to full-time.
- ▶ Additional teacher/advisor for the Homer office.
- ▶ Additional support hours at Seward office.
- ▶ Additional support person in Homer office.



# Connections

home.school.community.

Please contact Rich Bartolowits at [rbartolowits@kpbsd.k12.ak.us](mailto:rbartolowits@kpbsd.k12.ak.us)  
or call 907-714-8880 with any questions.