


PROJECT GRAD KENAI PENINSULA

In partnership with KPBSD since 2003





A 501 (c) 3 non-profit Governed by a Board of Directors

Bob Moore (Chair)

Conrad Woodhead (Vice-chair)

Rayna Bird (Alternate Vice-chair)

Millie Johnson

Vide Kroto

Alex Hetrick

Dannielle Malchoff

HISTORY OF PROJECT GRAD

PROVIDING QUALITY PROGRAMMING IN SOME OF THE MOST CULTURALLY UNIQUE K-12 SCHOOLS

- Russian Old Believer Schools

- Kachemak Selo
 - Nikolaevsk
 - Razdolna
 - Voznesenka

- Alaska Native Schools

- Port Graham
 - Nanwalek
 - Ninilchik
 - Tebughna

Expanding afterschool programming to Chapman School in 2019-2020



Isolated and rural communities

Who are we?

Administrative Staff



Jane Beck
**EXECUTIVE
DIRECTOR**



Celeste Novak
**COMMUNICATIONS
MANAGER**



Luana Stovel
BOOKKEEPER

Alaska Native Education Program Staffing



Kenny Daher
POST-SECONDARY AND
SITE COORDINATOR



Selina Mach
SOCIAL
COUNSELOR



Hayley Norris
Academic Coach



Alexandra Ravelo
ACADEMIC
COACH



Anna Meredith
ACADEMIC
COACH



Nita Reardon
AK NATIVE EDUCATION
CULTURAL CONSULTANT



Bill Noomah
CURRICULUM
DEVELOPER

U.S. DEPARTMENT OF EDUCATION

U.S. Alaska Department of Education and Early Development

21st Century Community Learning Center Afterschool Programming

STEAM Team



Chris Etwiler
SITE COORDINATOR
ACADEMIC COACH



Shellie Worsfold
ACADEMIC
COACH



Cody Davidson
ACADEMIC
COACH



Misha Klassen
ACADEMIC
COACH

State of Alaska Department of Health and Social Services

Positive Youth Development Afterschool Program

Creating Healthy Inclusive Learning Lifestyles (CHILL)



Chris Etwiler

**SITE COORDINATOR
ACADEMIC COACH**



Karina Marette

**ACADEMIC
COACH**



Kenneth Schneider,

**ACADEMIC
COACH**

Kenai Peninsula Borough School District

Kenai Peninsula Native Youth Leadership Program (KPNYL)



Jennifer Freeman
KPNYL SUPPORT
COORDINATOR



Bonnie Pierce
KPNYL
ASSISTANT

● Continuous Learning and Innovation ● Integrity ● Contagious Passion ● Teamwork ● Tenacity



Student  Centered

- Positive connections with adults
- Academic success
- Open doors of career/educational opportunities
- Confident and lifelong learners
- Youth Empowerment



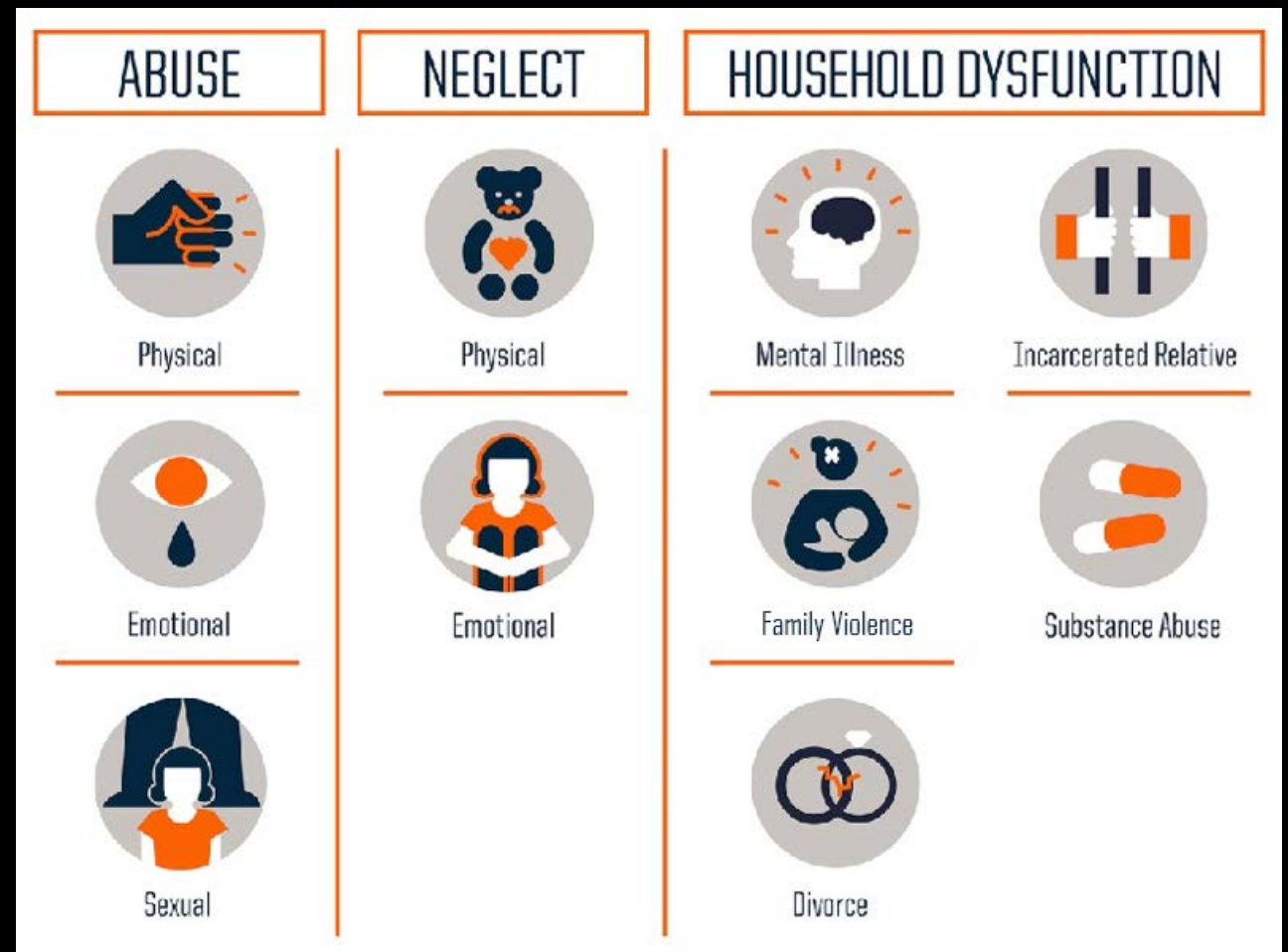
Contact Information: Jane Beck, Executive Director Phone: (907) 226-1876 Email: JBeck@kpbsd.k12.ak.us

WHY ARE WE HERE?



ACEs EFFECT

- Prolonged and toxic stress
- Brain growth
- Learning and memory
- Behaviors and attitudes
- Physical health
 - (heart rate, breathing, muscle tension, blood pressure, ability to fight infection...)
- Mortality



Building resiliency and webs of support



Schools work to engage the parents and community in the education and preparation of their children. While each student's academic Report Card is important, it only provides half of the story about that student's success. There are measurable metrics that provide data on what we call, "the other side of the report card."

Kaleidoscope Connect™ is based on an integrative, full-spectrum approach of youth development, which measures and assesses seven key metrics, what we refer to as "phactors", of a youth's developmental ecology — that is, the nature of the youth themselves and the world around them that affects them.



RED — The Rule of Five (Anchors for the "Web of Support"): The foundation for each youth's own personal village is having five caring adults (or more) in their lives, who have high expectations and provide opportunities, teach skills, and celebrate relative best in appropriate ways.



ORANGE — Tangible Strings (Adding strings to the "Web of Support"): Measurable supports provided through the youth's Anchors that shape their home, school, and community environment.



YELLOW — Intangible Strings (Adding strings of virtues to the "Web of Support"): Important, yet difficult to measure, beliefs, values, and behaviors that are being taught to and caught by the youth.



GREEN — Growing the Balloon: A person's innate characteristics, natural abilities, and talents that increase the likelihood they will remain connected to their Web of Support.

Kaleidoscope Connect's Student Support Card™ correlates each student's academic performance with the developmental ecology that surrounds them. It breaks down barriers, shows the strengths of individual students and families, and where they can make a difference.



BLUE — Scissor Cuts: Reducing or eliminating the conditions, actions, and attitudes that erode the strings being created by the Anchors.



INDIGO — Caring for the Carers (The web beneath your Anchors): Giving back to and showing appreciation for those who anchor your web to keep support them and keep them in your web even when circumstances in their own lives change.



VIOLET — Social Norms (The storm that affects the entire web): The climate and culture of the social environment (home, school, or community) that have been accepted or agreed upon by a critical number of adults.



A Kaleidoscope Snapshot is a measure of the particular mixture and strength of these colors at any given time in a youth's life.

We measure and record these snapshots using our activities, strategies, and tools.

They help give a youth and the people that care about them clarity and insight in order to improve the strength of their positive phactors, reduce the negative phactors, and continuously move and grow themselves into life-long satisfaction and success.

● Continuous Learning and Innovation ● Integrity ● Contagious Passion ● Teamwork ● Tenacity



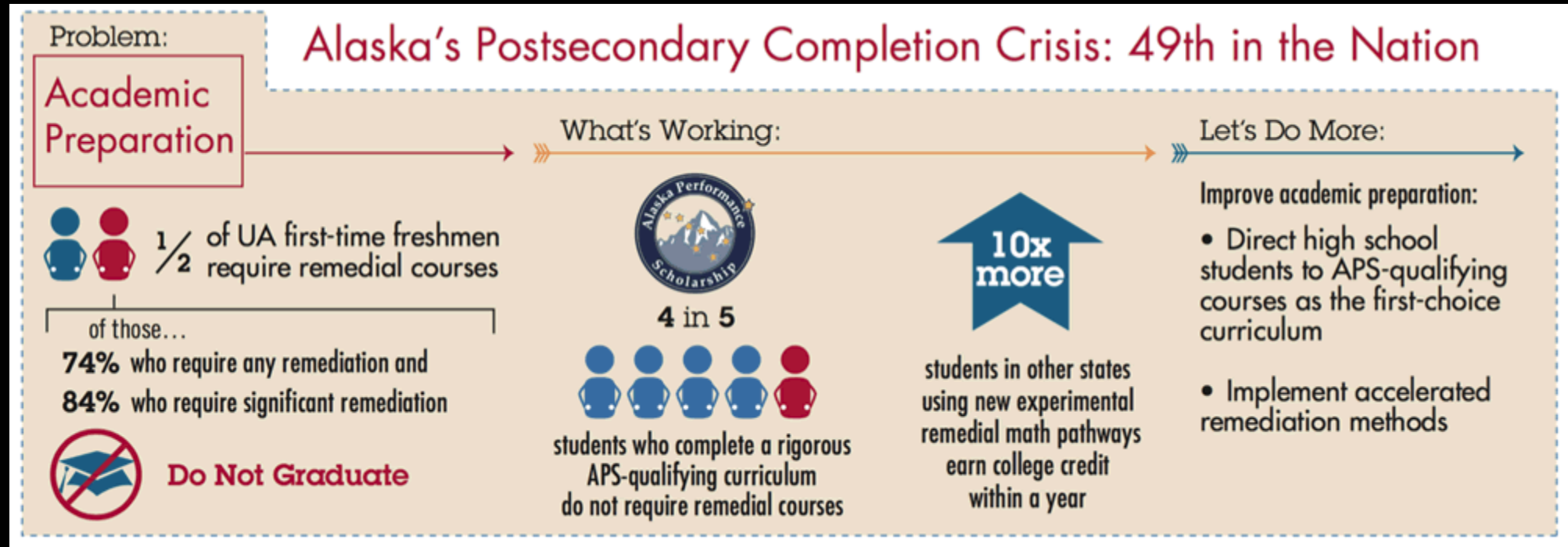
Student  Centered

- Positive connections with adults
- Academic success
- Open doors of career/educational opportunities
- Confident and lifelong learners
- Youth Empowerment



Contact Information: Jane Beck, Executive Director Phone: (907) 226-1876 Email: JBeck@kpbsd.k12.ak.us

Addressing Academics



Source: 65 by 2025 Metrics; Alaska CAN 2018

Academic Coaching

- Motivation, Relevancy & Learning
- Classroom Engagement
- Educational Planning
- Academic persistence, growth mindset, grit
- Teacher PD
- Student Advocacy
- Academic Support, individual tutoring
- Assistance to earn AK Performance Scholarship



● Continuous Learning and Innovation ● Integrity ● Contagious Passion ● Teamwork ● Tenacity



Student  Centered

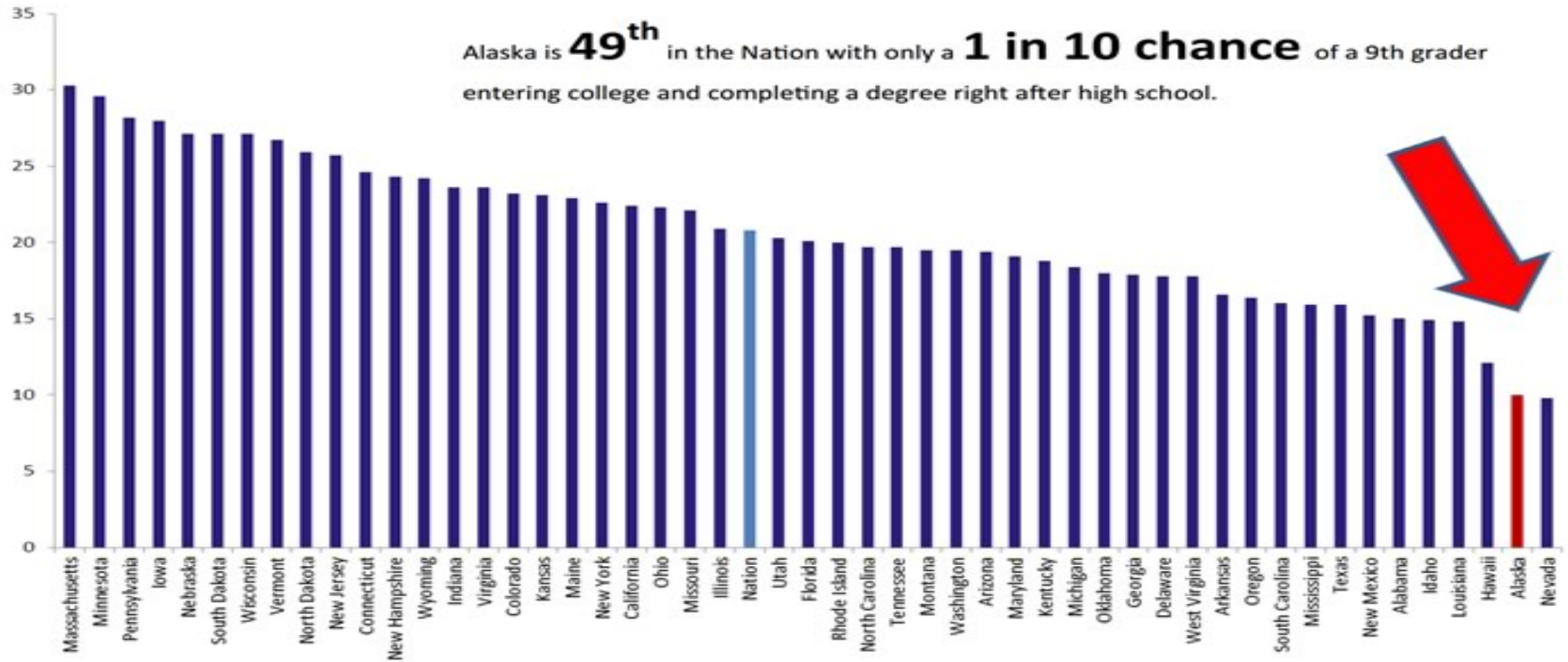
- Positive connections with adults
- Academic success
- Open doors of career/educational opportunities
- Confident and lifelong learners
- Youth Empowerment



Contact Information: Jane Beck, Executive Director Phone: (907) 226-1876 Email: JBeck@kpbsd.k12.ak.us

Alaskans are Facing Some Tough Issues...

ALASKA'S LAGGING POSTSECONDARY COMPLETION RATES



Postsecondary Support

- Prep for life after high school
- College, Vocational, Career readiness
- FAFSA, College application support
- Scholarship opportunities
- Transition to college assistance



Port Graham
K-4



Scholarship Component



Project GRAD Kenai Peninsula has awarded over **\$548,000** in scholarships, disbursing **\$179,000**.

HOW?

We have worked hard to secure an impressive amount of grant funding



- Federal grants
 - State grants
- Foundation grants
- Partnership grants

FUNDING STREAMS & PARTNERSHIPS SINCE 2003

1. **KPBSD**

1. Kenai Peninsula Native Youth Leadership (KPNYL) (2015 – present)
2. Migrant (Summer STEAM)

2. **Alaska Native Education Program** (since 2005)

3. **21st Century Community Learning Center Afterschool grant** (2018-2023)

4. **State of Alaska Dept. of Health & Social Services** (2019 – 2022)

5. **Ninilchik Traditional Council** (2018-present)

6. **Brightways Learning** (2014- present)

7. **GEAR UP partnership with KPBSD** (2005-2017)

8. **Kachemak Bay National Estuarine Research Reserve** (2017-2019)

9. **Chugach Alaska Corporation** (2015 - present)

10. **100 Women Who Care** (Sept. 2019)

11. **Homer Foundation** (Dec. 2018)

12. **Center for Alaskan Coastal Studies**

21ST CENTURY COMMUNITY LEARNING CENTER GRANT AWARD

- In Year Three of Five Year Award Period



- Kachemak Selo
 - Nikolaevsk
 - Ninilchik
 - Razdolna
 - Voznesenka



Each afterschool program incorporates healthy snack, STEAM lessons, collaborative circle, & physical activity for grades 3-8

Award: \$219,775 per year for five years

ART INFUSED STEM → STEAM

LESSONS ALIGNED WITH NEXT GENERATION SCIENCE STANDARDS



STEAM TEAM: EXPLORING, CHALLENGING, HANDS ON ENGINEERING, CREATIVE PROBLEM SOLVING, QUESTIONING, FINDING ANSWERS (USUALLY WITHOUT GOOGLE)





POSITIVE YOUTH DEVELOPMENT AFTERSCHOOL PROGRAM (PYDAP)

Three schools: Voznesenka, Chapman, Ninilchik

STEAM, IYD, Mindfulness, Physical activity, positive adult/youth connection, healthy choices,
substance/marijuana misuse prevention

\$250,000 per year for three years

Alaska Native Education Program Award

Funded as of 10/1/2019

Three year award

Nanwalek
Port Graham
Tebughna

*Promoting Opportunity and Wisdom for Education and
Resilience*

“POWER Project”

Now hiring for Academic Coaches, Cultural Liaisons

Award: \$745,901 per year





Five Key Components of the *POWER* Project

- 1) Implement AK Cultural and Content Standards
- 2) Provide Professional Development to mitigate impact of ACES and trauma
- 3) Incorporate Integrative Youth Development
- 4) Provide Academic Coaches and a Social Counselor for educational planning (check and connect)
- 5) Provide a Postsecondary Success Coordinator

Alaska Native Education Program Award

Funded as of 10/1/2021

Three year award

Nanwalek
Port Graham
Tebughna

*Resilience, Independence, Strength, and
Education*

"RISE Project"

Now hiring for Academic Coaches, Tech Specialist

Award: \$1,956,735 for 3 years



Key Goals of the *RISE Project*

- 1) Increase links between traditional Native wisdom and classroom learning
- 2) Build resiliency for K-6 students challenged by trauma and ACEs through evidence-based activities
- 3) Improve student mental health and wellness
- 4) Improve academic proficiencies for AN students in reading, writing, and STEAM



Kenai Peninsula Native Youth Leadership Program

Vision

We Are

Native Youth Leaders

We Believe

In Who We Are & What We Do

We Carry On

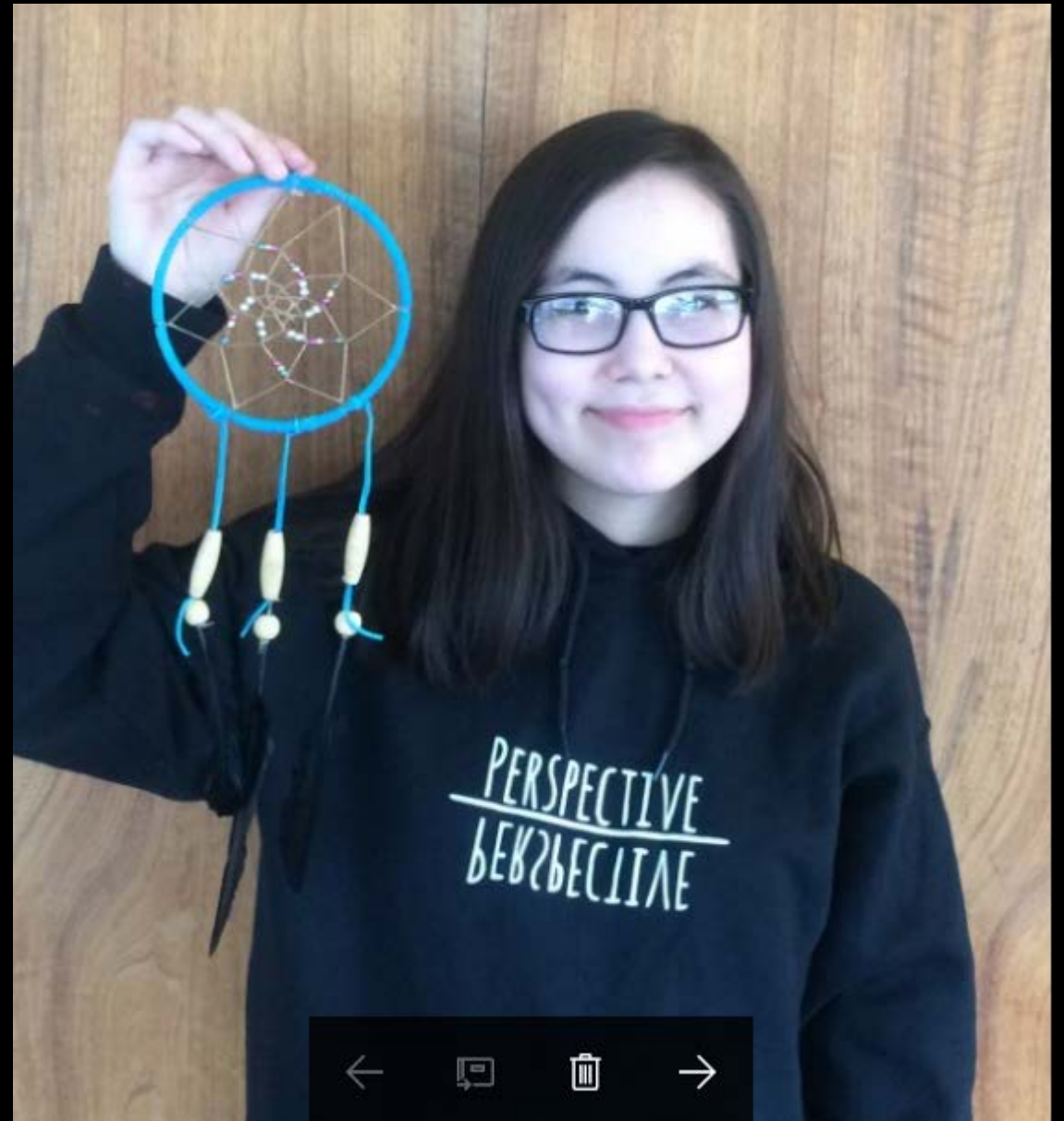
Traditions, Knowledge, Culture, & Values

While Working To

Change Our Future

We Are The

Faces of Today & the Changes of Tomorrow





Project-based learning
connected with AK Cultural
Standards



Professional Development Conference: Fostering Joy & Resilience
Girdwood, AK
Alyeska Hotel
August 3-5, 2021



19 students, 4 youth leaders, 6 PGKP staff

Professional Development Conference: Fostering Joy & Resilience

Girdwood, AK
Alyeska Hotel
August 3-5, 2021



Speakers:

Day 1: Ford Roosevelt; *Education is a Human Right*

Lunch Keynote: Father Michael Oleksa

Day 2: Paul Osincup; comedian – *What's Funny About Resilience? Using Humor to Find Joy & Decrease Stress*



Closing Ceremony: Pamyua



IMPACT

Project **GRAD's**
successful grant
proposals have
resulted in



TOTAL GRANT FUNDING
INFUSED INTO THE DISTRICT
SINCE 2003

\$20,528,241



Project (POWER) - Promoting Opportunity & Wisdom with Education & Resilience - will provide new pathways toward challenges facing educators to improve the system which currently leaves many Alaska Native students behind – cultural disconnection between school and community, high incidences of trauma and ACEs in the population, limited access to professional development for teachers working in isolated villages, and few enrichments and adult connection opportunities for students. POWER is a K-12 program allowing students to thrive academically and socially by understanding the importance of education, graduation, identifying aspirations after high school, and access to career and post-secondary programs.

Year 2 Performance



✓ 194 K-12 Students served



✓ 100% of All Educators were AK Cultural Trained



✓ 94% of students surveyed feel supported toward academic support



✓ 91% of students surveyed feel safe to reach out to someone on non-academic issues

✓ Adult Anchors showed a 20% increase from the previous year in contacting school staff

for assistance with students having academic, behavioral or social-emotional issues



20%



✓ Currently 100% of students reported in Lighthouse that they are on track to graduate with

their four-year cohort



✓ 100% of students have an Educational Plan that provides personalized timely interventions

– “Check and Connect”



ACCOUNTABILITY

- External evaluations available for review (see packet for ANE and 21st CCLC evals)
- Timely submissions of semi-annual, annual, and final performance reports to state, federal, foundation funders
- Annual independent audits consistently result in “no findings”
- Teacher, parent, student surveys for continuous improvement
- Data driven (PEAKS, attendance, subgroups, progress monitoring)

FUTURE OF PGKP → WE ARE GROWING



New challenge: COVID!

Project **GRAD** thanks KPBSD
for its continued partnership

