

Port Graham

Killer Whales

2022-2023

Vision for this year

- The vision for this year is to improve reading and math score across all grade levels using fun and engaging lessons and incorporating math and reading across all content areas.



Project based learning as much as possible.



Sod House Models- US History



U.S. History class making mud hut style dwellings similar to the ones described to have been here based on early Russian accounts.



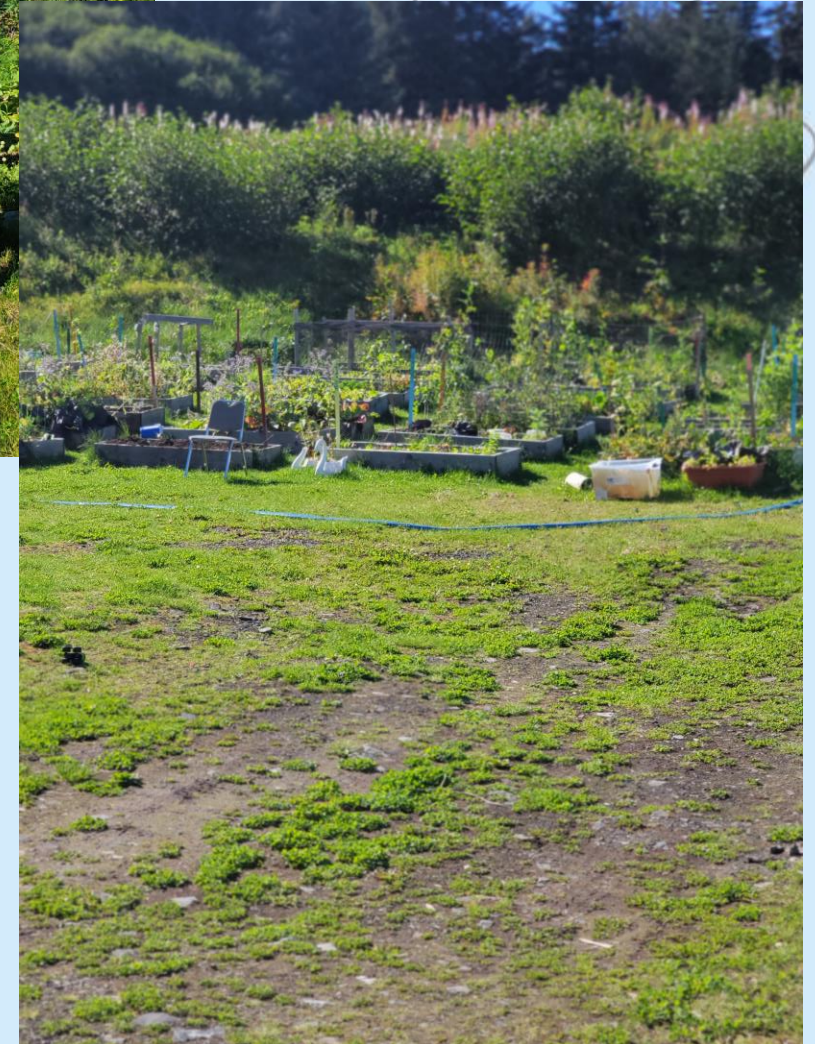
Elementary- Layers of the earth.

The students made the playdough, colored it, and then layered it into a ball. This is the result when it was cut in half.



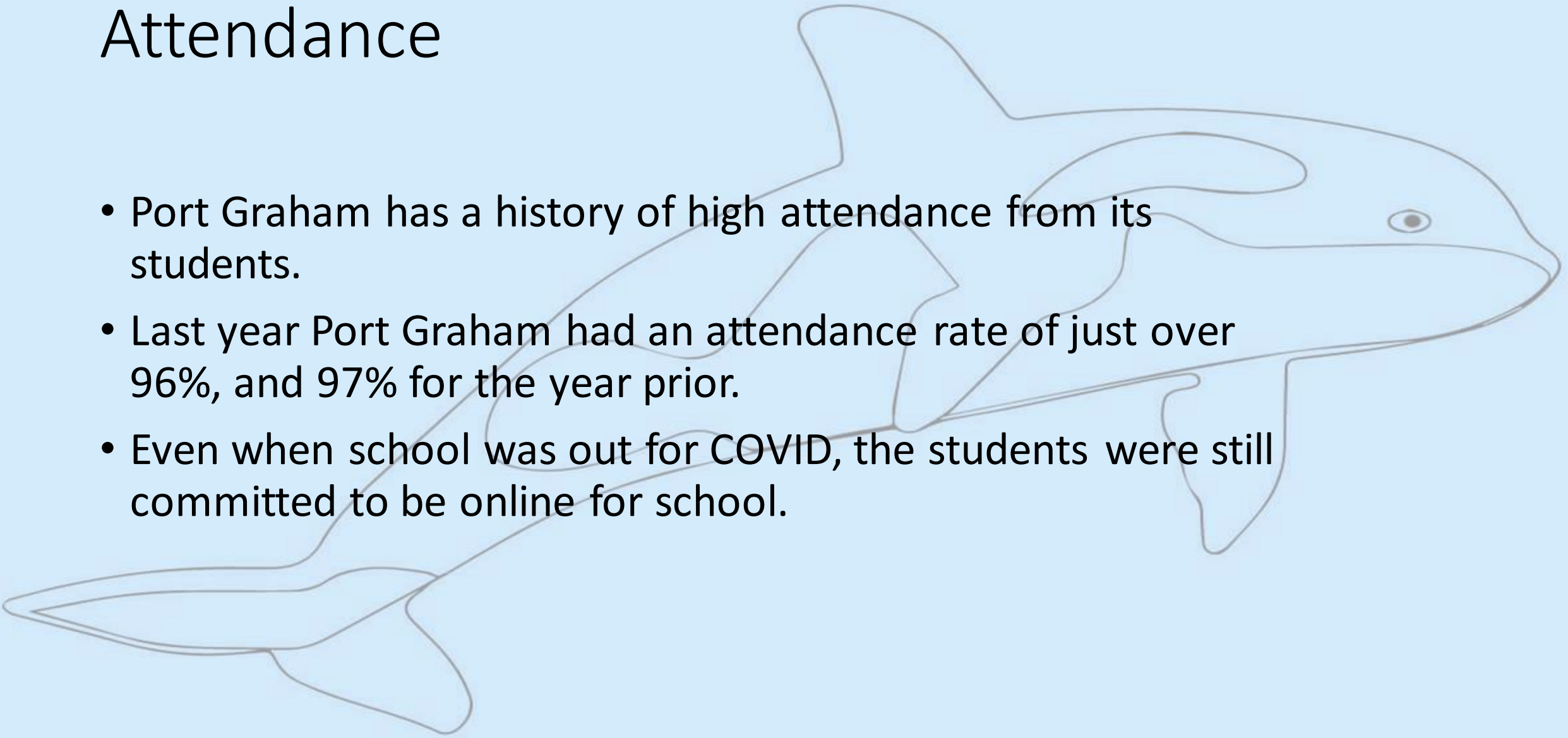
Elementary- Plant life cycle

The students walked to our community garden and met with the curator of the community garden to discuss the needs of the different fruits and vegetables growing there.

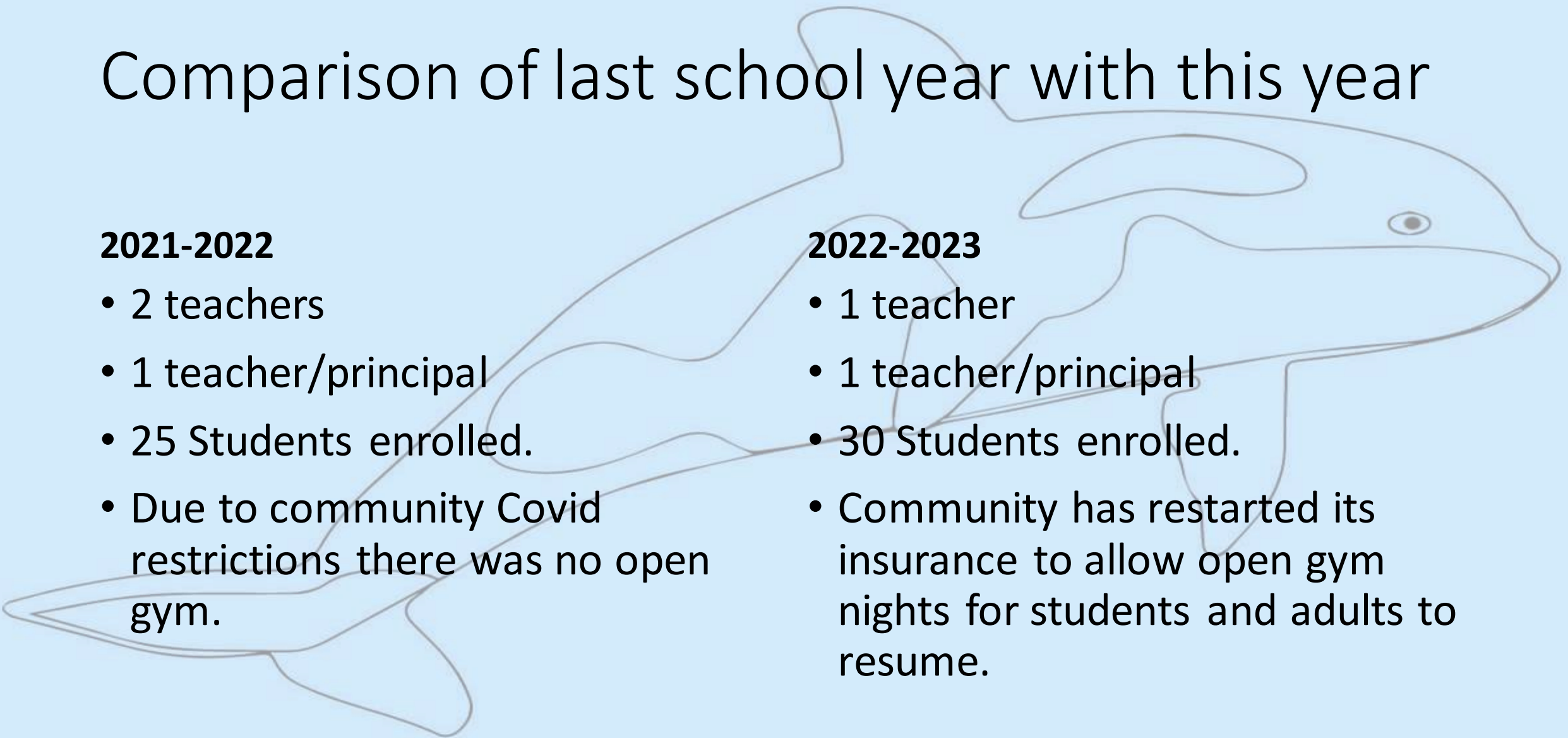


Attendance

- Port Graham has a history of high attendance from its students.
- Last year Port Graham had an attendance rate of just over 96%, and 97% for the year prior.
- Even when school was out for COVID, the students were still committed to be online for school.



Comparison of last school year with this year



2021-2022

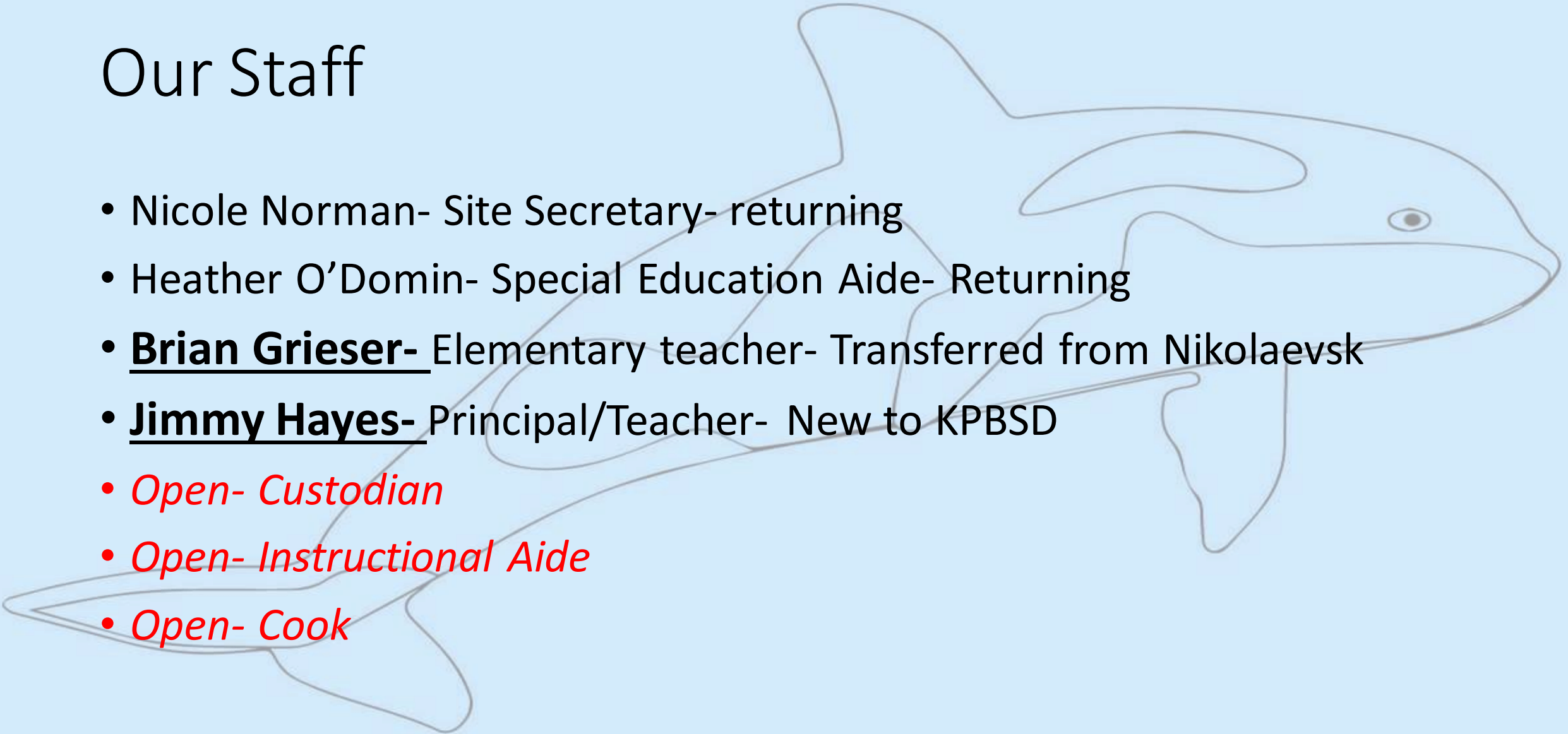
- 2 teachers
- 1 teacher/principal
- 25 Students enrolled.
- Due to community Covid restrictions there was no open gym.

2022-2023

- 1 teacher
- 1 teacher/principal
- 30 Students enrolled.
- Community has restarted its insurance to allow open gym nights for students and adults to resume.

Our Staff

- Nicole Norman- Site Secretary- returning
- Heather O'Domin- Special Education Aide- Returning
- **Brian Grieser**- Elementary teacher- Transferred from Nikolaevsk
- **Jimmy Hayes**- Principal/Teacher- New to KPBSD
- *Open- Custodian*
- *Open- Instructional Aide*
- *Open- Cook*



Nicole Norman

- Administrative Assistant
- She is also the Summer Youth Supervisor for Port Graham Council where she teaches youth basic job skills and traditional subsistence skills.
- She was raised in Port Graham and completed high school at SOHI. She went on to earn her certificate in computer repair through Job Corps.
- She moved back to Port Graham in 2019 where she started with KPBSD as the school cook until last year when she became our secretary.

Heather O'Domin

- Special Education Aide
- She is originally from Chignik Lake, the Lake & Peninsula School District.
- She has been consistently in this role at Port Graham School, for 15 years.

Brian Grieser

- K-6 Teacher
- Intervention Coordinator
- Site Champs teacher
- Brian has 13 years of teaching experience, but he began his career in education as a custodian with KPBSD, where he has also served as an instructional aide.
- Brian also bring 9 years of teaching experience in remote Alaska Native communities with him.

Jimmy Hayes

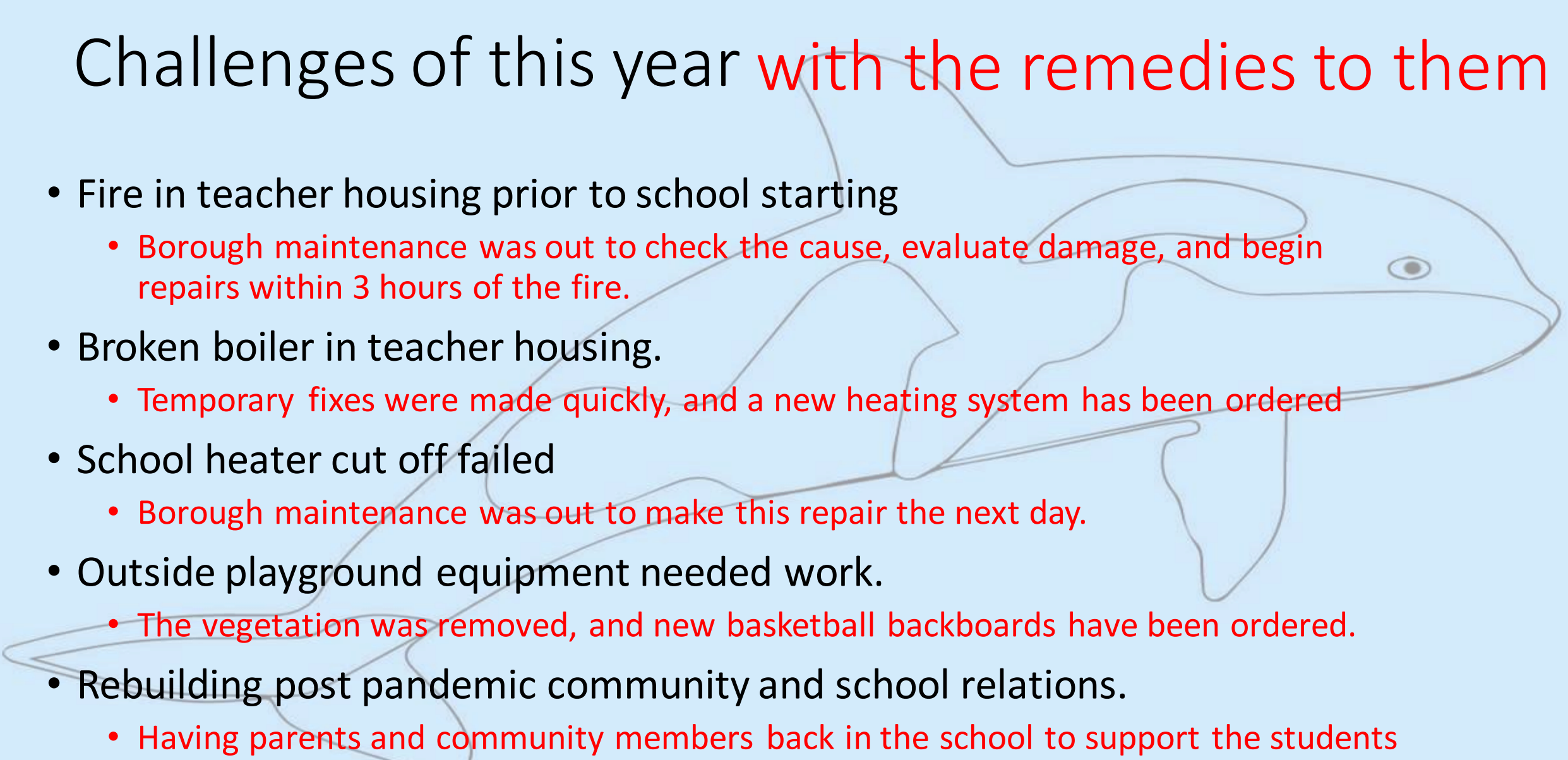
- 7-12 Teacher
- Site Principal
- Jimmy has worked as a teacher for 9 years in the lower 48. He was a counselor for 2 years in Anchorage. He is now in his 4th year as a principal; all of which have been in remote native Alaskan communities.

Covid Restrictions Updated on August 12, 2022

- At this time anyone is allowed to fly into Port Graham with a Negative Covid test within 72 hours of travel.
 - A positive Covid test will require 10 days quarantine outside of the village and to be symptom free to return back into Port Graham.
- Once here it is required to wear a mask anytime you are going to be around other people until after your 5th day in the community.
- On day 5 you can test at the clinic again and stop wearing the mask if you have a negative test.
- A positive test inside the village requires
- Within the community if you are close contact with a confirmed covid-ill individual you must quarantine for 5 days

Challenges of this year **with the remedies to them**

- Fire in teacher housing prior to school starting
 - **Borough maintenance was out to check the cause, evaluate damage, and begin repairs within 3 hours of the fire.**
- Broken boiler in teacher housing.
 - **Temporary fixes were made quickly, and a new heating system has been ordered**
- School heater cut off failed
 - **Borough maintenance was out to make this repair the next day.**
- Outside playground equipment needed work.
 - **The vegetation was removed, and new basketball backboards have been ordered.**
- Rebuilding post pandemic community and school relations.
 - **Having parents and community members back in the school to support the students and their families as they engage towards stronger education.**



Silver Linings

- The teacher housing fire turned out to have a silver lining of sorts. That day I not only met our borough maintenance super stars, but I also was able to meet and interact with the many Port Graham community members that were there quickly to serve me and our school district. The quick actions of the local fire department, led by Melvin Malchhof, aided by 12 community members (including 3 high school students) helped to save our teacher housing unit.
- This also allowed for me to get to know some community members early on that I would not have met as soon due to the Covid mitigation quarantine requirements that were still in place at the time.