



**KPBSD
EFFECTIVE LITERACY INSTRUCTION
WORKSESSION**

Monday, November 7, 2022



Outcomes:

- **Highlight historical events pertaining to literacy in KPBSD**
- **Report current events impacting KPBSD literacy initiatives and instruction**
- **Review essential evidence based components of reading instruction**
- **Share next steps for improving explicit literacy instruction for all students in KPBSD**



2017-
2021

Fountas and Pinnell PD roll out

Due to Covid, training on new F&P program was inconsistent and challenging to deliver due to many factors related to Covid.

Spring-Summer
2022

AK Reading Symposium

KPBSD attendees of the symposium met to discuss preliminary steps KPBSD could take in 22-23 school year.

Governor Dunleavy Signs the AK Reads Act

During the summer, instructional coach developed K-5 scope and sequence for F&P and Heggerty materials.

Fall
2022

KPBSD Effective Literacy Planning

Build literacy expertise

Offer LETRs and evidence based literacy training to over 40 teachers and Administrators

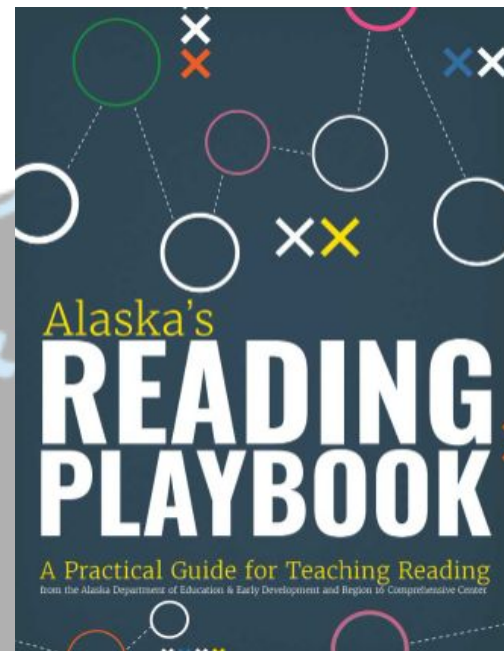
2022-
2024

Effective Literacy Team Start up

Convene District Effective Literacy Planning Team

Effective Literacy Team produces district wide guidance for Literacy components of the strategic plan and supporting initiatives and processes


Spring 2023 Form District ELA Curriculum Committee



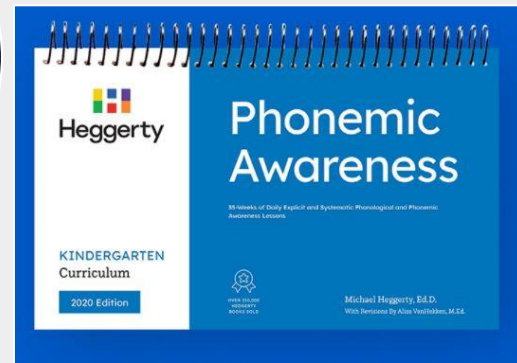


Outcomes:

- Highlight historical events pertaining to literacy in KPBSD
- Report current events impacting KPBSD literacy initiatives and instruction
- **Review essential evidence based components of reading instruction**
- Share next steps for improving explicit literacy instruction for all students in KPBSD



**KPBS
Building Expertise
in Literacy
2022-2023**

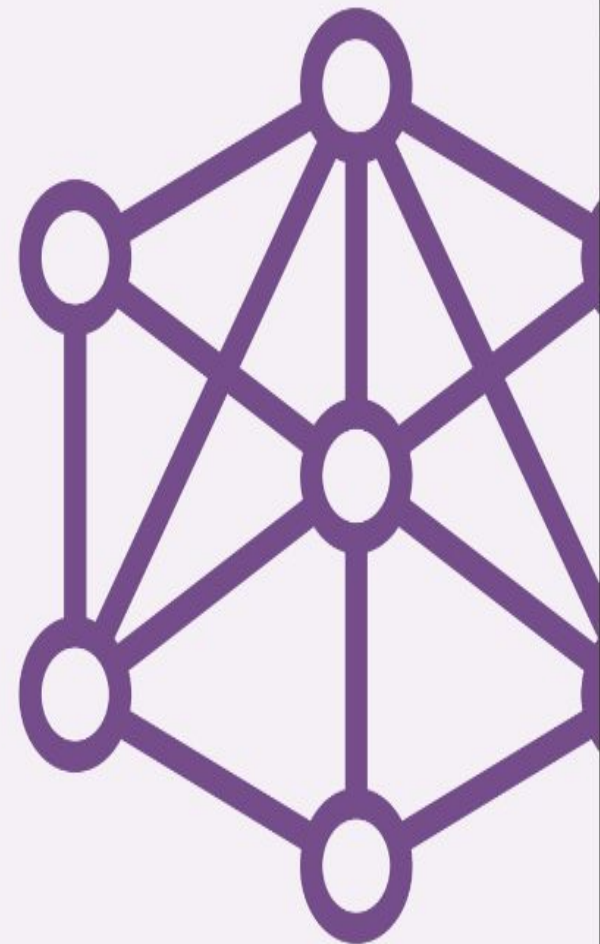


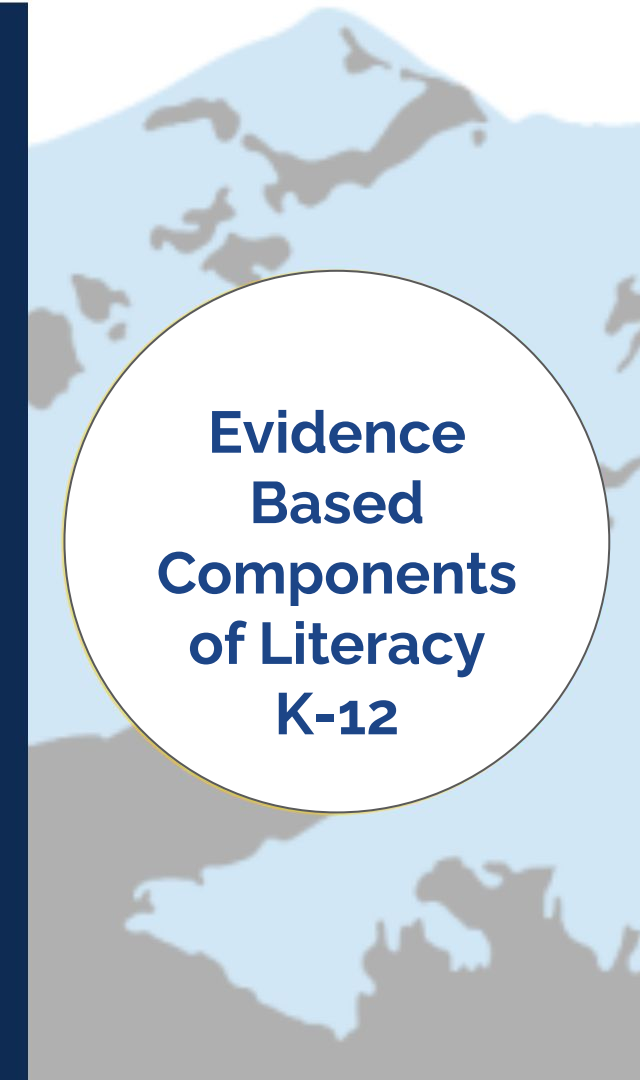


**The Science
behind Effective,
Explicit Reading
Instruction**

**The Science of Reading is Derived
From Researchers in Multiple Fields:**

- ✔ Cognitive Psychology
- ✔ Communication Sciences
- ✔ Developmental Psychology
- ✔ Education
- ✔ Special Education
- ✔ Implementation Science
- ✔ Linguistics
- ✔ Neuroscience
- ✔ School Psychology

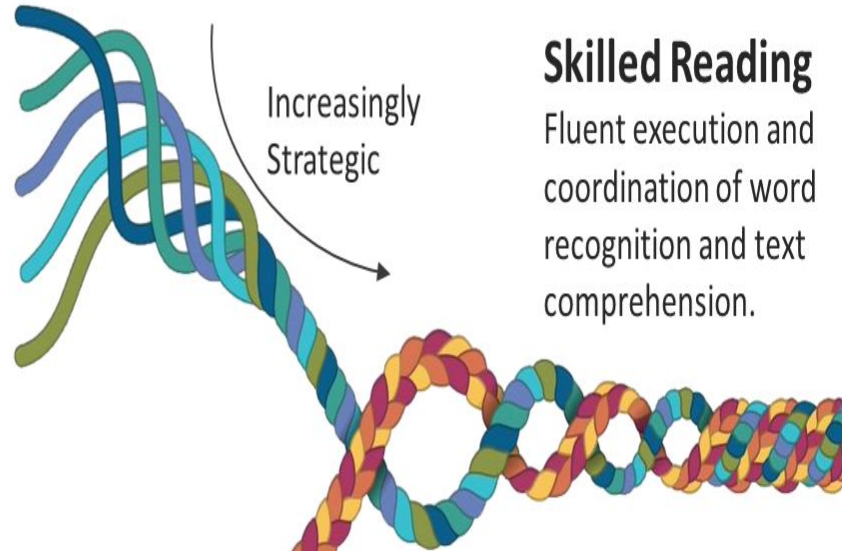




**Evidence
Based
Components
of Literacy
K-12**

Language Comprehension

- Background Knowledge
- Vocabulary Knowledge
- Language Structures
- Verbal Reasoning
- Literacy Knowledge



Word Recognition

- Phonological Awareness
- Decoding (and Spelling)
- Sight Recognition

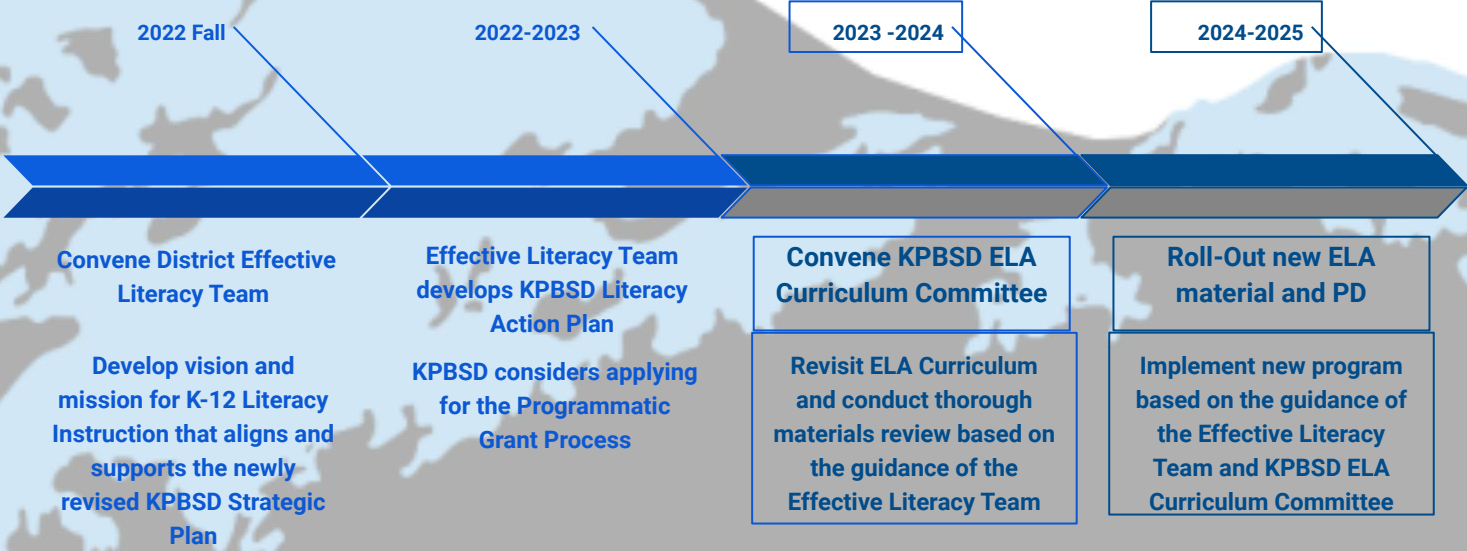




Outcomes:

- Highlight historical events pertaining to literacy in KPBSD
- Report current events impacting KPBSD literacy initiatives and instruction
- Review essential evidence based components of reading instruction
- **Share next steps for improving explicit literacy instruction for all students in KPBSD**

Next Steps





Questions???

• 2022-2023 PROFESSIONAL DEVELOPMENT •