

Homer Forest School



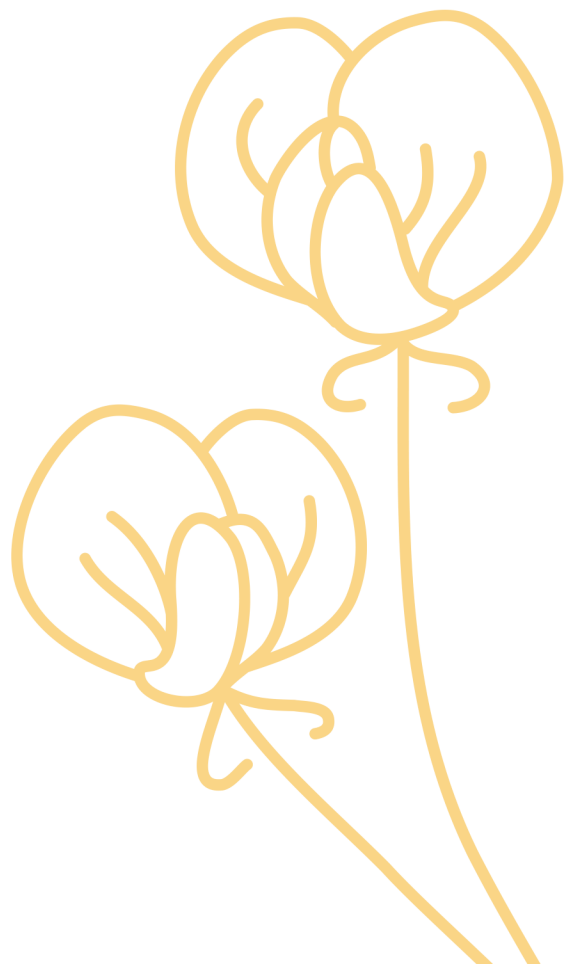
LEARNING FROM THE ROOTS UP

Initial Charter School Application

Presentation to the School Board

December 5, 2022

Kenai Peninsula Borough School District Local School Board



HFS Charter Council (APC)

Hanna Young (Chair)*

Kay Sturm (Vice-Chair)*

Savanna Paladino (Secretary)*

Jeanne Anderson (Treasurer)

Angela Head

Dave Kaufmann

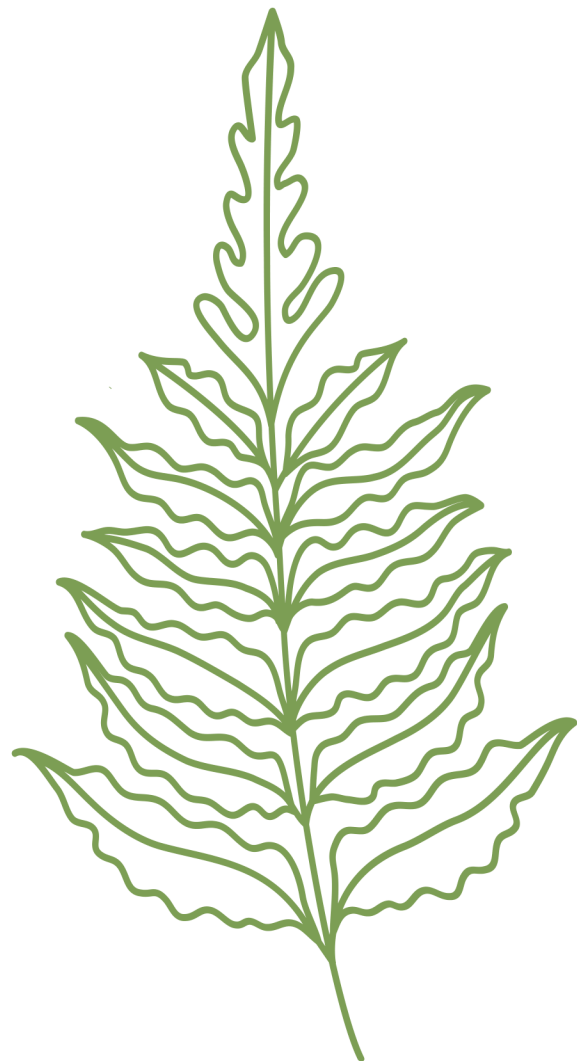
Travis Brown





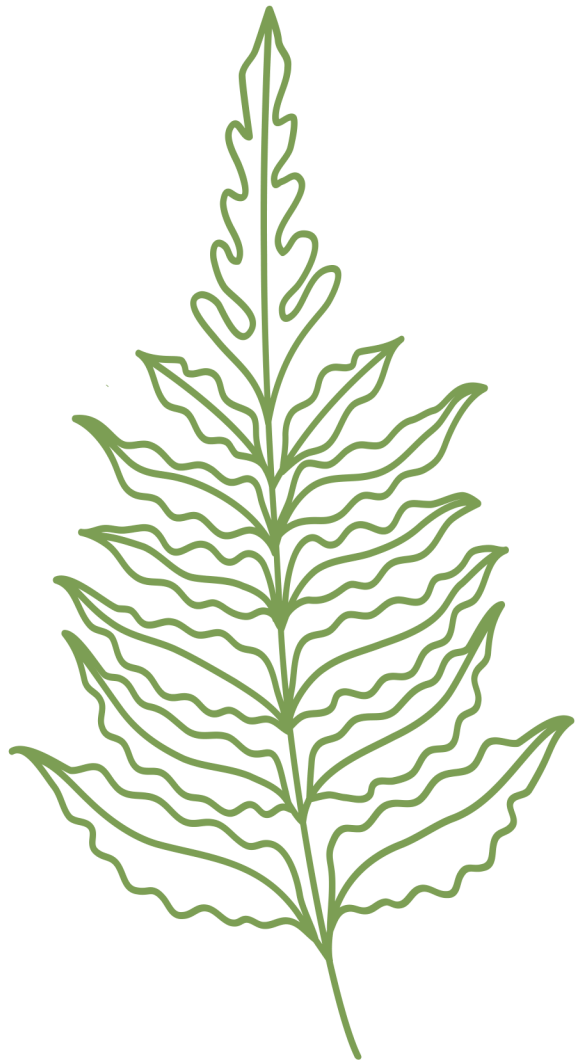
Application Overview

- *Section 1: Establishment of the Charter*
- *Section 2: Organization and Administration*
- *Section 3: Educational Program & Student Achievement*
- *Section 4: Professional Development*
- *Section 5: Facility*
- *Section 6: Admission*
- *Section 7: Fiscal*
- *Section 8: Transportation*



Application Overview

- ***Section 1: Establishment of the Charter***
- *Section 2: Organization and Administration*
- *Section 3: Educational Program & Student Achievement*
- *Section 4: Professional Development*
- *Section 5: Facility*
- *Section 6: Admission*
- *Section 7: Fiscal*
- *Section 8: Transportation*



Vision

A school where an outdoor environment is a classroom for all students and learning ignites a sense of wonder, stewardship, and curiosity.

Mission

HFS is an environment in which the majority of learning happens away from screens and in the outdoors and engages students in meaningful experiences, rigorous academics, and authentic projects grounded in their community. Positive collaboration takes place on the part of students, families, staff, educators, and the broader community to nurture an environment of lifelong learning.



Proof of Concept

- *Theory of Learning*
- *Forest Schools Origin*
- *Forest Schools as nature-based or outdoor centric*
- *Place-Based Education*
- *Project-Based Learning (PBL) Pedagogy*
- *ESSA Approved Evidence*
- *Blended Learning Model*

Philosophy of Learning at HFS

1

Diverse Learning
Environments -
*Time Spent
Outdoors*

2

Research-Based /
Mindful Use of
Tech

3

Access/Inclusivity
to an Outdoor
Learning
Environment

4

High Quality PBL

5

Integrated SEL

6

Reciprocal
Community
Connections

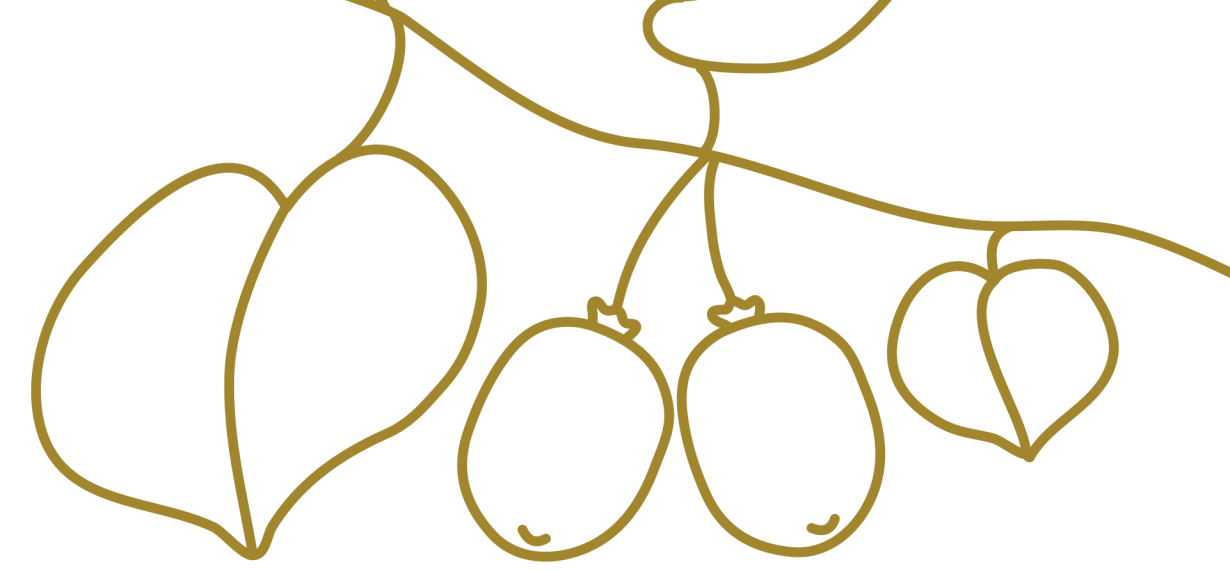
7

Supportive Work
Environment

8

Core Disciplines
that Guide AK
State Standards

Year 1 – 80



Grade/Age-Pod	Enrollment Estimates	Staffing Projections
K	16	1 ELEM
1-2	25	1 ELEM
3-4	25	1 ELEM
Blended Learning K-8	14	1 FULL TIME TEACHER
<i>Inclusion Learning</i>	1 AIDE	1 SPED
ENROLLMENT CAP	80 Students	1 PRINCIPAL 0.5 Office Manager

In Year 2, this model grows to the full school total of 115 students in K-8.

Year 2 - 115



Grade/Age-Pod	Enrollment Estimates	Staffing Projections
K	14	1 ELEM
1-2	24 (12 each)	1 ELEM
3-4	24 (12 each)	1 ELEM
5-6	24 (12 each)	1 ELEM
7-8	24 (12 each)	1 MS/SEC
Blended Learning	Remaining Cap	1 BL LEAD
<i>Inclusion Learning</i>	1 AIDE	2 SPED
ENROLLMENT CAP	115 STUDENTS	1 PRINCIPAL 0.5 Office Manager

Community Engagement



September 28, 2022

Interest in Enrollment Form Released



October 2022

- Active posting in town and on local social media pages about upcoming community conversations
- Fireweed APC Chair/Principal Meeting
- Homer Public Library Community Conversation
- Anchor Point Senior Center Community Conversation



November 2022

KBBI Coffee Table Interview

103

Student enrollment interest list



Number of Students on Interest List	Entering Grade in Fall 2023	Entering Age-Pod in Fall 2023	Enrollment Cap	Blended Learning Interest
37	Kindergarten	K	16	17
10	1st	1-2	25	5
12	2nd	1-2		9
10	3rd	3-4	25	3
6	4th	3-4		1
1	5th	Blended Only in Year 1 K-8 CAP: 14		1
11	6th			4
7	7th			3
2	8th			2
Total: 96	-			

Blended Learning Program

- Enrolled as FTE Students
- Up to 14 in Year 1, K-8
- Full Time Teacher
- No Allotment (*not homeschool*)
- Curriculum, materials, and resources supplied
- 4-5 hours of offered onsite programming in accordance with *AS 14.03.040. Day in Session*



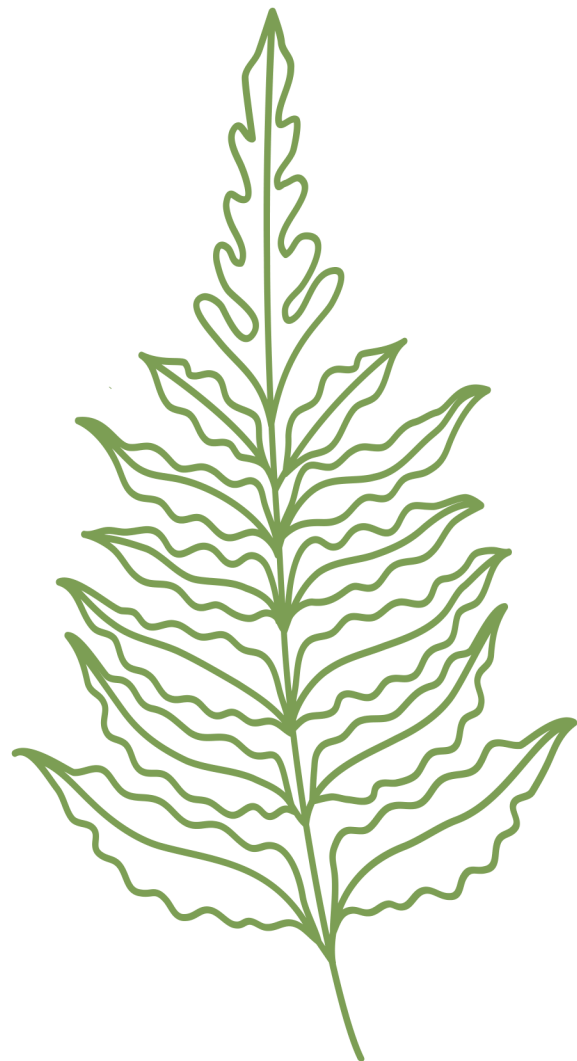
Section 1

Key Points:

- In Year 1, a charter can fall below the 75-student threshold and still receive the 1.45 multiplier, due to the Foundation Funding Formula.
- In Year 2, enrollment will increase to 115 students. In the case that it does not, 4 students have been added to the proposed model to bring the total small model cap to 80 students (previously 76).

Application Overview

- *Section 1: Establishment of the Charter*
- ***Section 2: Organization and Administration***
- *Section 3: Educational Program & Student Achievement*
- *Section 4: Professional Development*
- *Section 5: Facility*
- *Section 6: Admission*
- *Section 7: Fiscal*
- *Section 8: Transportation*



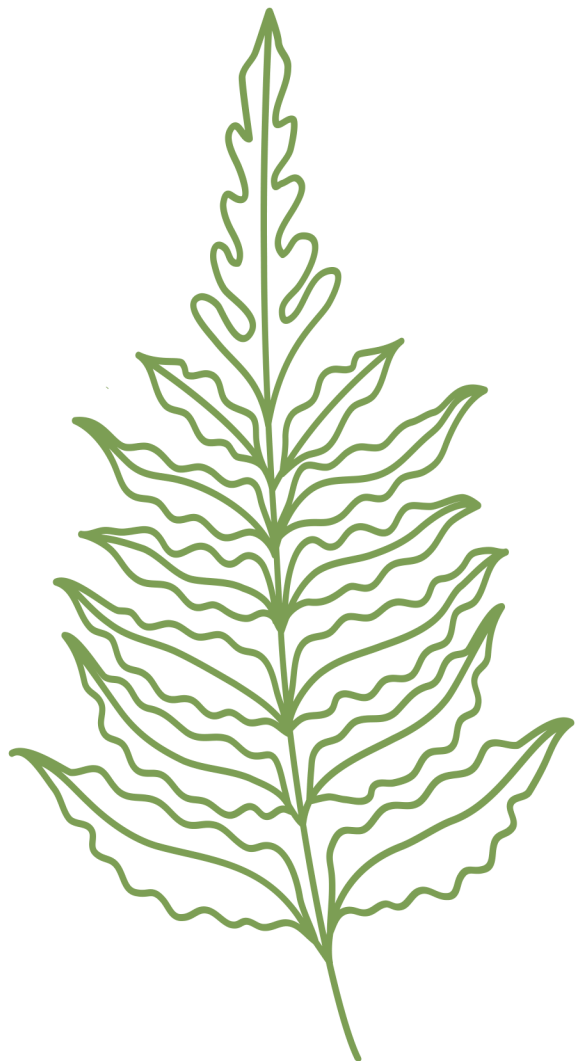
Section 2

Key Points:

- The Homer Forest School Charter Council (APC) will hire and oversee the acting school Principal in accordance with AS 14.03.255: *Organization and Operation of a Charter School*
- Principal and Teacher Recruitment will be underway in Winter 2022-2023.
- The Daily School Schedule is outlined to reflect a balance of indoor/outdoor and same-age/mixed-age instructional learning time.
- HFS will follow the school district calendar in Year 1 and will submit any requests for exceptions in a timely manner.

Application Overview

- *Section 1: Establishment of the Charter*
- *Section 2: Organization and Administration*
- ***Section 3: Educational Program & Student Achievement***
- *Section 4: Professional Development*
- *Section 5: Facility*
- *Section 6: Admission*
- *Section 7: Fiscal*
- *Section 8: Transportation*



Education Program Overview

WHEN + WHERE?

The importance of the daily schedule

WHAT we learn

Alaska State Standards/Cultural Standards

HOW we learn

Project-based modules

Foundational skill-building in math and literacy

How we KNOW we're learning

Clear delineation to a variety of assessments

Learning Connection to HFS Values

Positive Leadership, Skill-Building for Life, Community Connection, Compassionate Stewardship

How staff are supported through Professional Development

Building capacity to carry out the charter

The End Goal

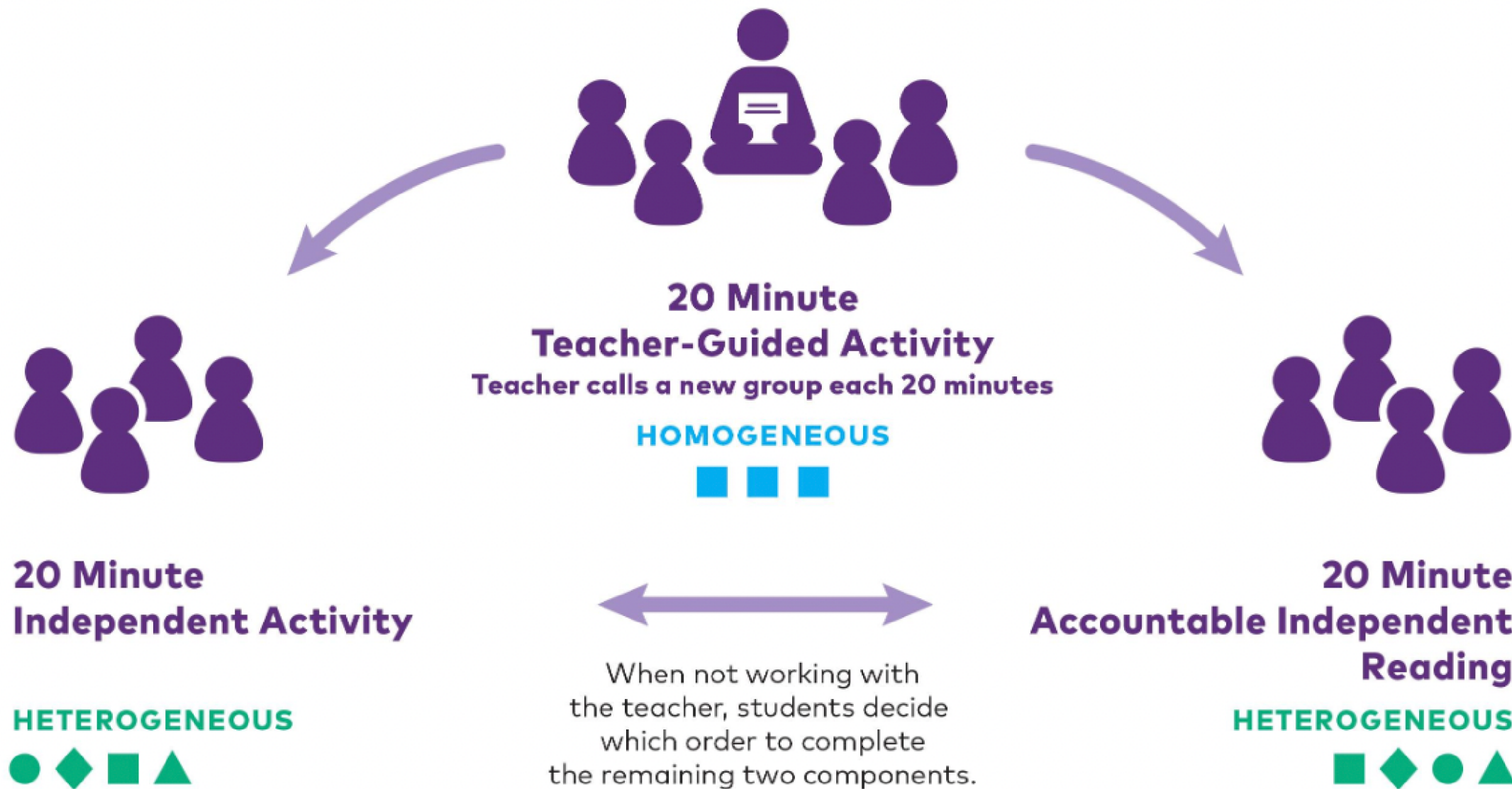
Graduate Profile for Student Achievement

Breakdown of Learning Blocks

ADVISORY	FLEXIBLE LEARNING BLOCK*	OWL
indoors/outdoors	indoors	outdoors/partial
SEL and Academic Support	Skills-Focused Teaching	Exploratory and Project-Based Learning
Check in, intervention, RTI, student reflection	Foundational Reading Skills <i>-EL Education</i>	Project-Based Learning Modules- all subjects
	Foundational Math Skills <i>-Wild Math / Open Ed</i>	Learning Labs -all subjects
	Performance Tasks for OWL <i>(i.e. writing and research)</i>	Community Partnerships
10%	40% Mondays - 170 Minutes T-F - 110 Minutes	50% Mondays - 110 Minutes T-F - 170 Minutes

Example 3rd grade: Individualized Learning Block Time

ALL BLOCK: FLEXIBLE GROUPING



Literacy at HFS and the Science of Reading

Project-Based Modules + Learning Labs
OWL Block + FL Time

SCARBOROUGH'S READING ROPE (2001)

LANGUAGE COMPREHENSION

BACKGROUND KNOWLEDGE
(facts, concepts, etc.)

VOCABULARY
(breadth, precision, links, etc.)

LANGUAGE STRUCTURE
(syntax, semantics, etc.)

VERBAL REASONING
(inference, metaphor, etc.)

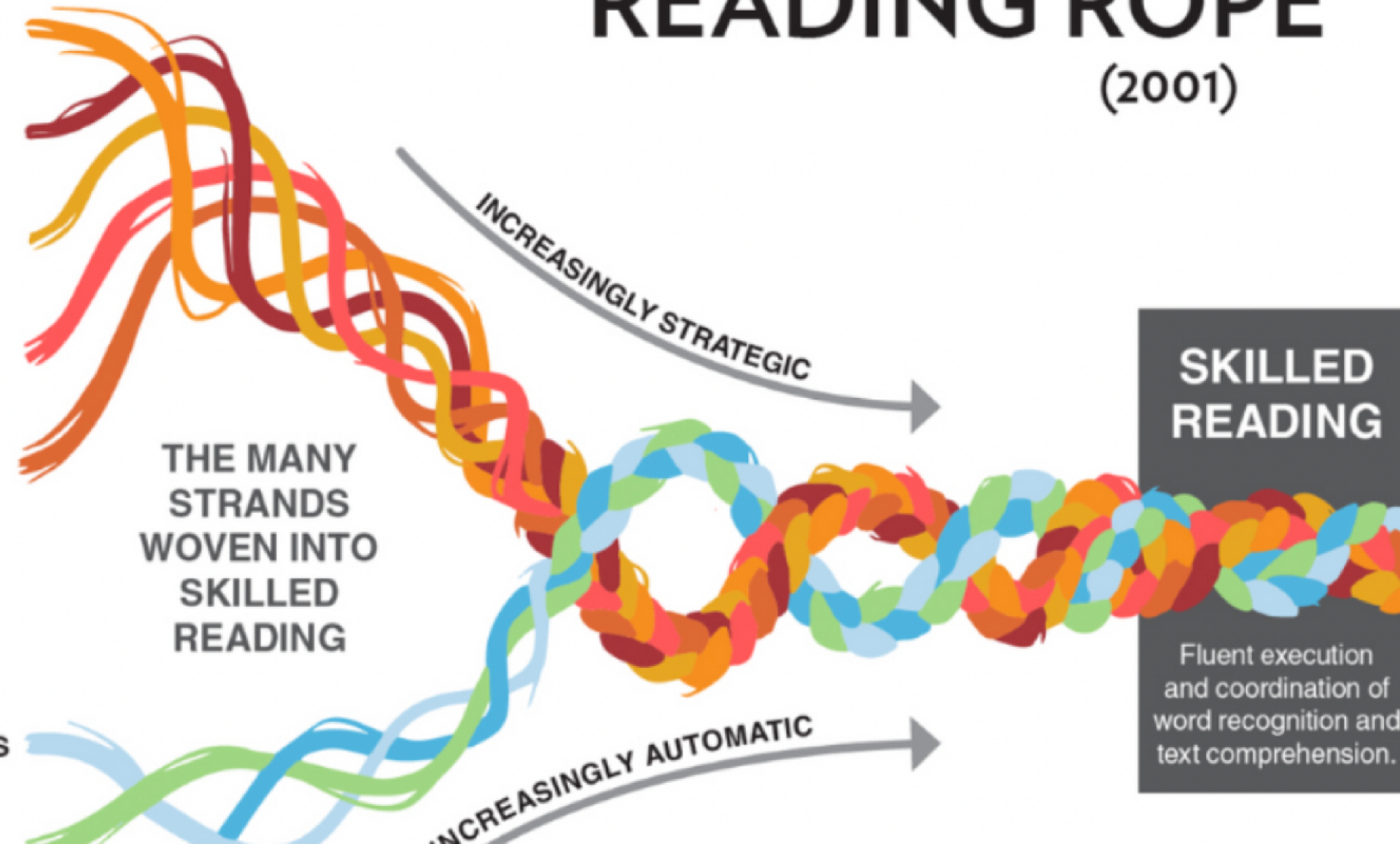
LITERACY KNOWLEDGE
(print concepts, genres, etc.)

WORD RECOGNITION

PHONOLOGICAL AWARENESS
(syllables, phonemes, etc.)

DECODING
(alphabetic principle,
spelling-sound correspondences)

SIGHT RECOGNITION
(of familiar words)



Reading Foundational Skills K-2
Literacy Skill Building 3-6
in FL Time

EL EDUCATION LANGUAGE ARTS CURRICULUM

K-2 Language Arts Curriculum

Content-Based Literacy

Reading Foundations Skills Block
K-2 Skills Block

Module Lessons



Labs

3-5 Language Arts Curriculum and Life Science Modules

Content-Based Literacy

Life Science Modules

Module Lessons



Additional Language and Literacy Block
ALL Block

6-8 Language Arts Curriculum

Content-Based Literacy

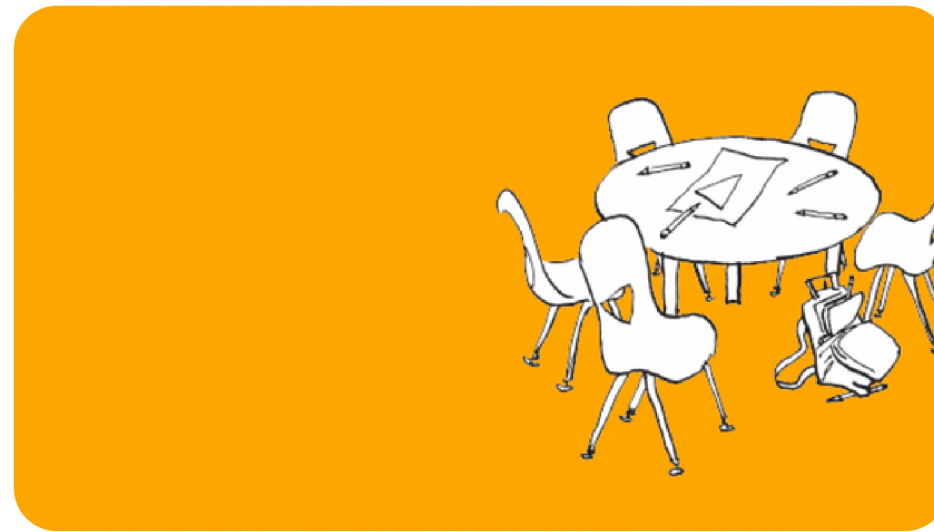
Module Lessons

Mathematics



Wild Math

K-5



Emergent Math

Problem-Based Sets

3-6



Open-Up Math

6-8

PROJECT-BASED LEARNING AT HFS

Over the course of a school year, student learning is scaffolded to support deep understanding of content and skills.



CONNECTION TO PLACE

Practice asking questions, making observations, and forging connections to prior knowledge.

Beginning of the Year >>



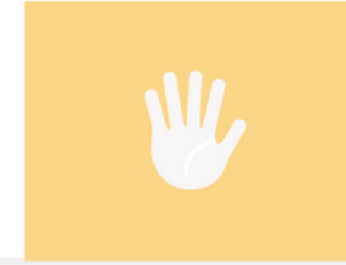
EXPLORATIONS

Shorter "activities" and "lessons" that focus on skill building and content exposure, and allow for teachers and students to practice routines and structures for an outdoor learning environment



INVESTIGATIONS

Longer projects that are connected to key learning goals (standards), can tie in multiple disciplines, skills and artifacts, and has an authentic context.



SERVICE + SHARING

Takes learning outside of a school context, connect with experts, community members and peers, and may include a community service-oriented product.

<<End of the Year

<p>ESSENTIAL or DRIVING QUESTION:</p>				<p>CONNECTION TO PLACE</p>	
<p>PROJECT OVERVIEW:</p>	<p>In this project, students will...</p>			<p>KEY VOCABULARY</p>	
<p>FINAL PRODUCT(S)</p>	<p>Aligned to Learning Goals Below</p>				
<p>LEARNING GOALS / STANDARDS</p>				<p>ASSESSMENT TOOLS</p>	
<p>SELECTED KEY SKILLS:</p>	<p>Example: Communicating Effectively</p>				
<p>SELECTED KEY CONTENT & PERFORMANCE:</p>	<p>Source: Alaska State Standards</p>				
<p>KEY STUDENT MILESTONES: Clear student goals for each phase of a project</p>	<p>Phase 1</p>	<p>Phase 2</p>	<p>Phase 3</p>	<p>Phase 4</p>	

Kindergarten	1-2	3-4	5-6	7-8
Benchmark Literacy and Math	Benchmark Literacy and Math	Benchmark Literacy and Math	Benchmark Literacy and Math	Benchmark Literacy and Math
Formative Assessment/ Feedback	Formative Assessment/ Feedback	Formative Assessment/ Feedback	Formative Assessment/ Feedback	Formative Assessment/ Feedback
	Summative Assessments <i>*Learning Portfolio</i>	Summative Assessments <i>*Learning Portfolio</i>	Summative Assessments <i>*Learning Portfolio</i>	Summative Assessments <i>*Learning Portfolio</i>
	SSG Skills Cycles	SSG Skills Cycles	SSG Skills Cycles	SSG Skills Cycles
	End of Quarter Family-Teacher Conferences	Student-Led/Family Conferences	Student-Led/Family Conferences	Student-Led/Family Conferences
	Quarterly Narratives Comments	Quarterly Narratives Comments	Quarterly Narratives Comments	Quarterly Narratives Comments
Student Showcase Opportunities	Student Showcase Opportunities	Community Day Exhibition (EOY)	Project Exhibit (EOS) Community Day (EOY)	Project Exhibit (EOS) Community Day (EOY)
				-8th-grade Portfolio Defense
1st Grade Readiness Assessment / ADP		AK STAR in ELA/Math	Grade 5: Alaska Science Assessment AK STAR in ELA/Math	Grade 8: Alaska Science Assessment AK STAR in ELA/Math

Written Instructional Objectives for Student Achievement



Alaska State Standards

- ELA
- Reading Foundations
- Math
- Science
- Arts
- SS/Content Areas



Scope and Sequence

- Wild Math
- Emergent Math
- Open Up Resources
- EL Education

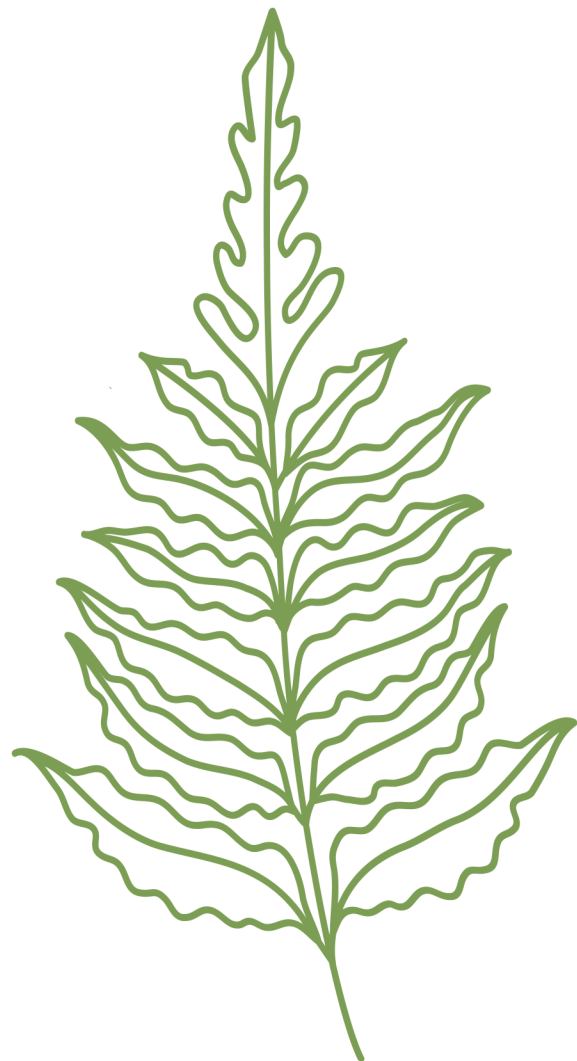


Graduate Profile

Homer Forest School's
Graduate Attributes

Application Overview

- *Section 1: Establishment of the Charter*
- *Section 2: Organization and Administration*
- *Section 3: Educational Program & Student Achievement*
- ***Section 4: Professional Development***
- *Section 5: Facility*
- *Section 6: Admission*
- *Section 7: Fiscal*
- *Section 8: Transportation*



Professional Development

1

**Individual Level
Support**

2

**Collaborative
Weekly
Learning**

3

**Sustained +
Relevant PD**

Professional Development

1

Individual Level Support

Fostering an environment of "coaching" where individual teachers and staff are supported in their growth and practice.

Focus on:

- Peer-to-peer support
- Regular opportunities for reflection, feedback, and action
- Opportunities to engage in PD of personal interest

Different from:

- A formal principal evaluation

Professional Development

2

Collaborative Weekly Learning

Each week begins with a 55-minute session dedicated to ongoing professional development.

Focus on:

- Sustained, positive, growth-oriented workplace culture
- Executing a culture of collaborative learning
- Providing time to align with the goals of the charter

Different from:

- A staff meeting where information is relayed

Professional Development

3

**Sustained +
Relevant PD**

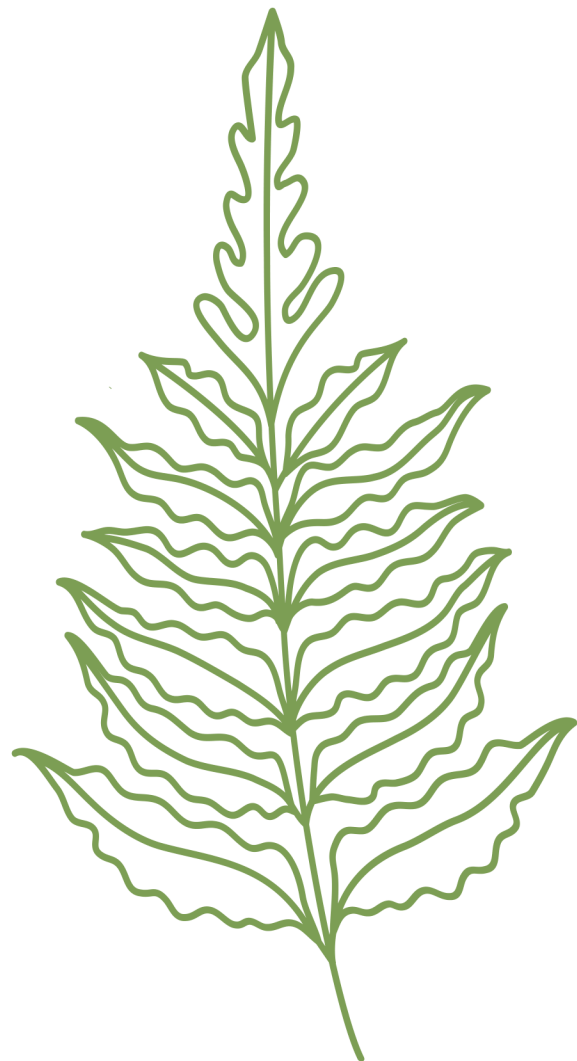
Special focus professional development ensures that teachers are receiving timely, relevant support to create and implement learning experiences for their students aligned with the goals of the charter.

Focus on:

- PBL Project Design and Implementation
- Teaching Literacy (Science of Reading)
- Building Systemic SEL into teaching practices
- Outdoor-centric education
- Outdoor Preparation
- National or regional conference or learning opportunities

Application Overview

- *Section 1: Establishment of the Charter*
- *Section 2: Organization and Administration*
- *Section 3: Educational Program & Student Achievement*
- *Section 4: Professional Development*
- ***Section 5: Facility***
- *Section 6: Admission*
- *Section 7: Fiscal*
- *Section 8: Transportation*



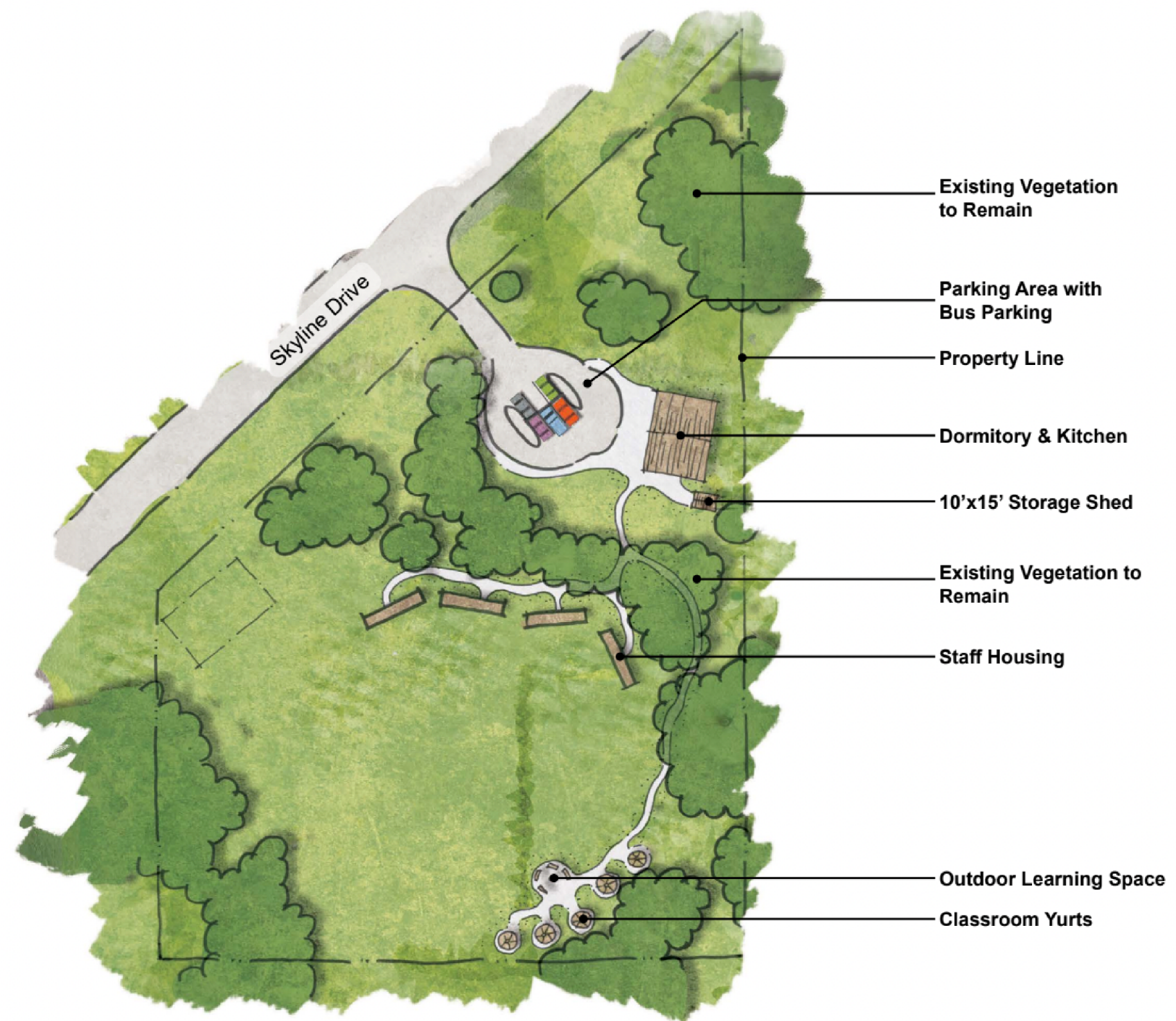
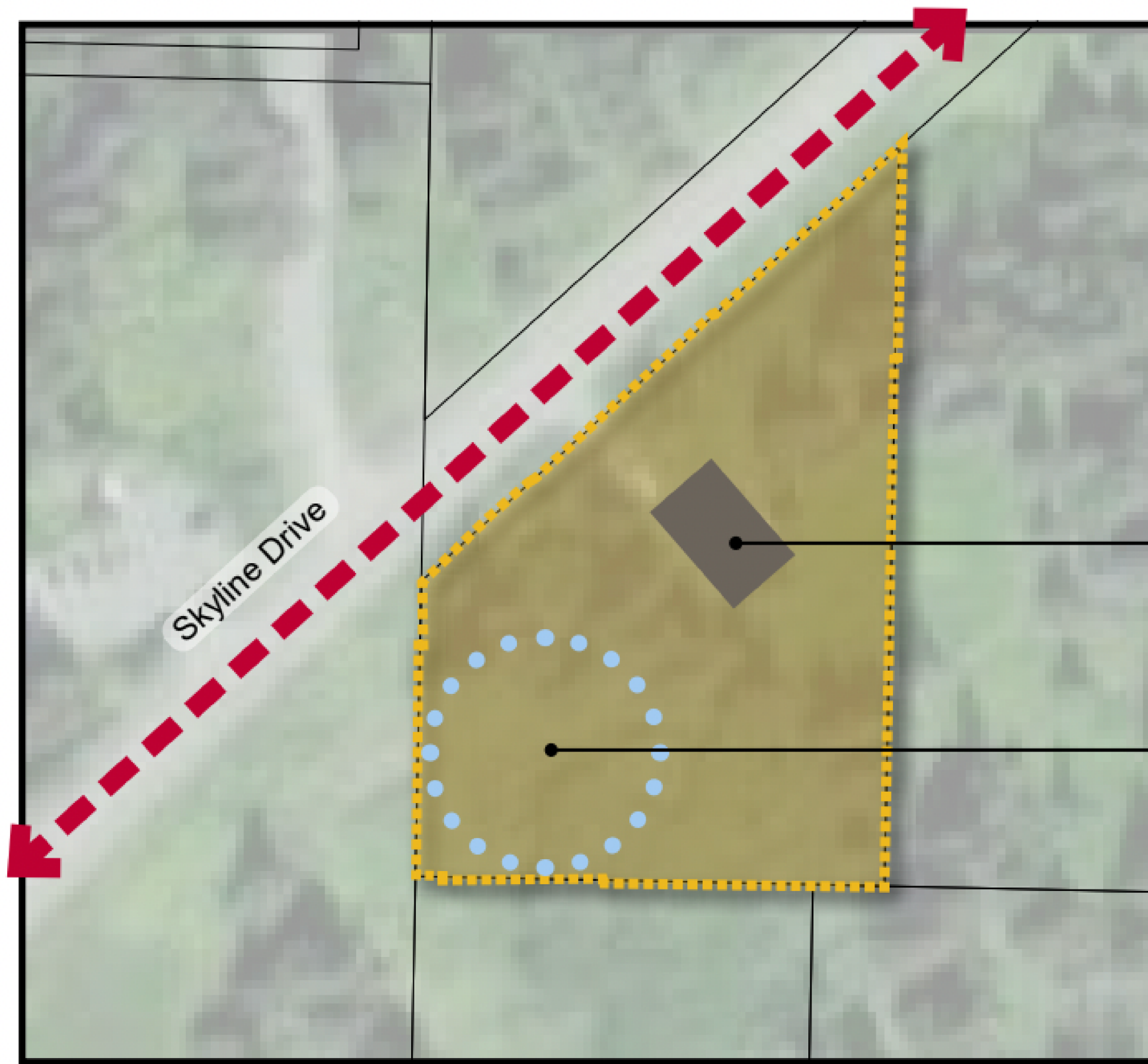
Facility Update

Community Partnership:
The Center for Alaskan Coastal Studies
(CACCS)

Location: Campus Build at "A-frame"
property adjoining The Carl E. Wynn
Nature Center on Skyline Drive

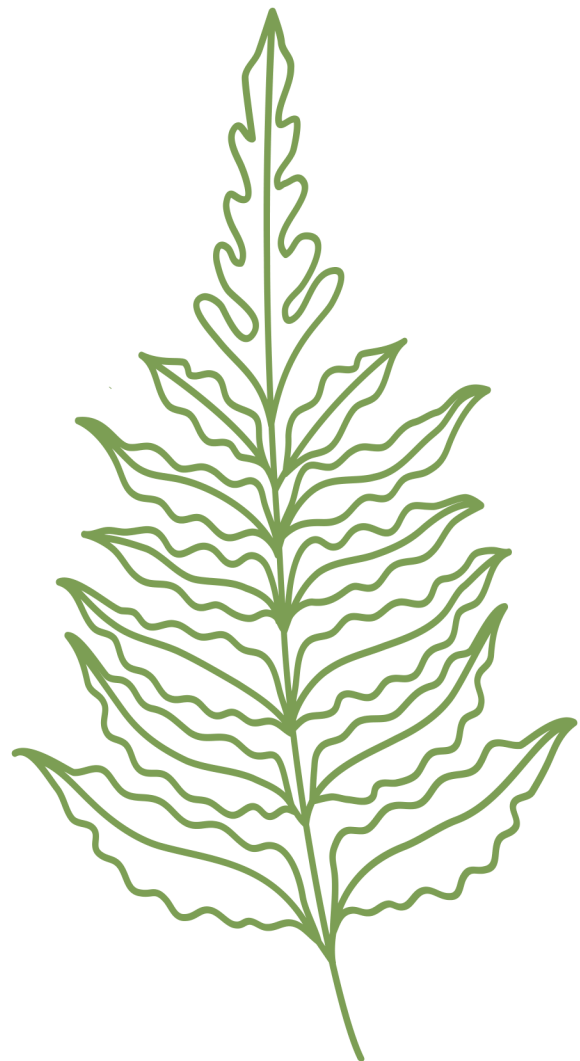
Year 1 Proposal - Fall of 2024





Application Overview

- *Section 1: Establishment of the Charter*
- *Section 2: Organization and Administration*
- *Section 3: Educational Program & Student Achievement*
- *Section 4: Professional Development*
- *Section 5: Facility*
- ***Section 6: Admission***
- *Section 7: Fiscal*
- *Section 8: Transportation*



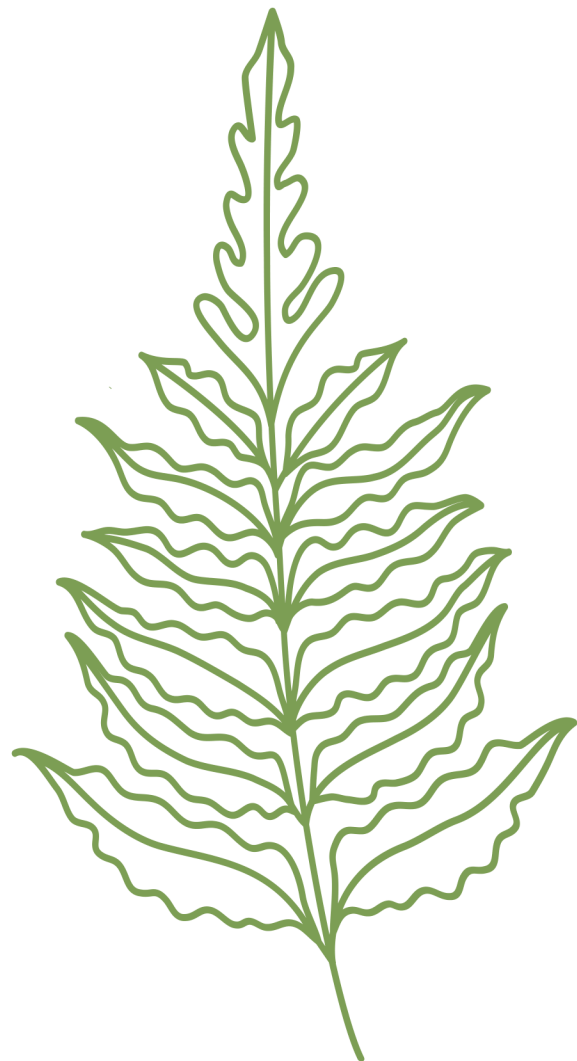
Section 6

Key Points:

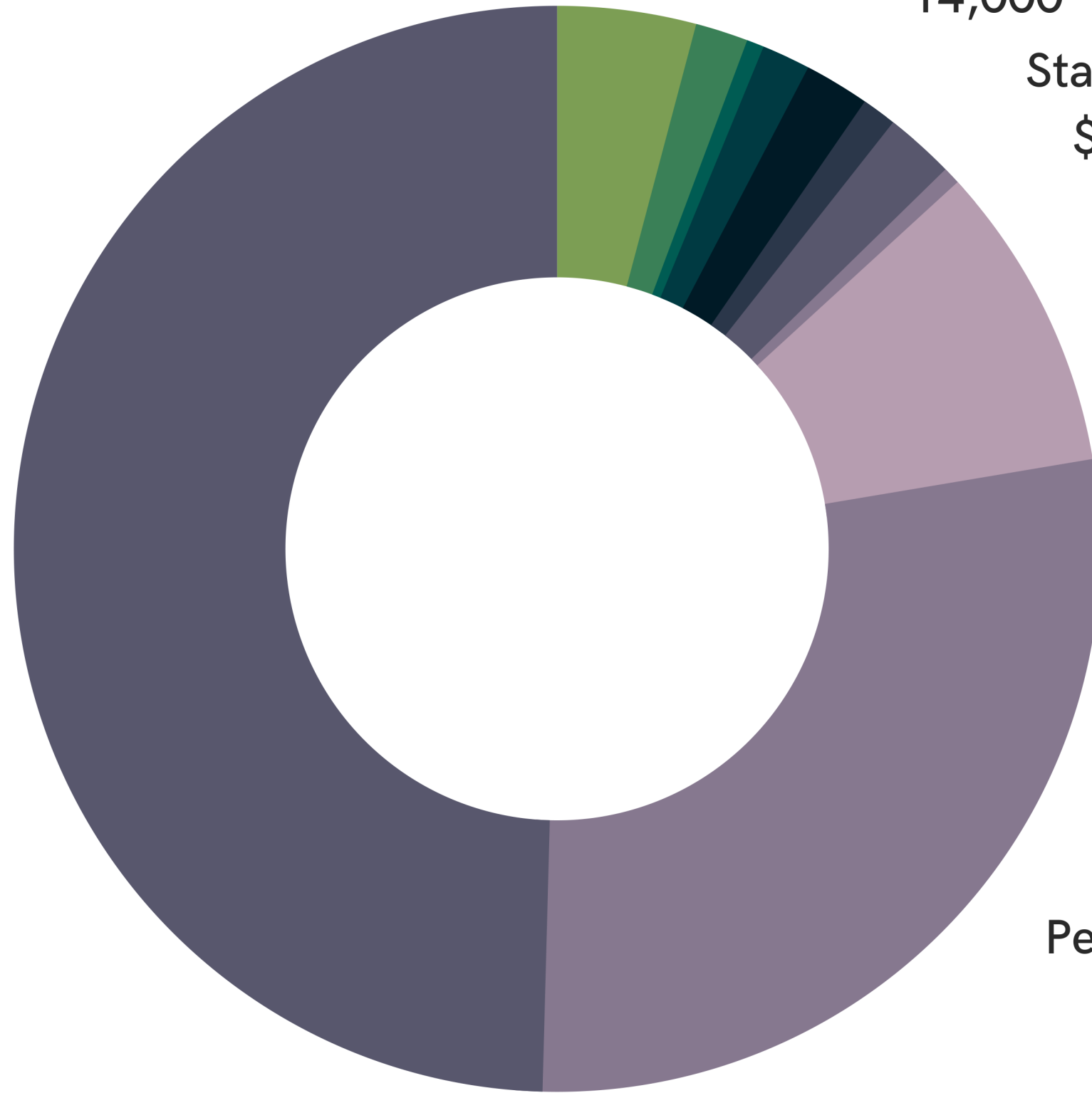
- Homer Forest School welcomes any student whose families choose the school as the appropriate and right fit for their child.
- If the number of families that submit an intent to enroll exceeds the enrollment capacity, Homer Forest School will open a public lottery on a specific date. *See Appendix G/H*
- Homer Forest School seeks to recruit and enroll a diverse group of students that reflects the vibrant community of Homer.
- All efforts will be made to make information publically available.

Application Overview

- *Section 1: Establishment of the Charter*
- *Section 2: Organization and Administration*
- *Section 3: Educational Program & Student Achievement*
- *Section 4: Professional Development*
- *Section 5: Facility*
- *Section 6: Admission*
- ***Section 7: Fiscal***
- *Section 8: Transportation*



Certificated
\$480,695



Facility
\$40,000

Utility Services
14,000

Staff Travel
\$5,000

Non-Certificated
\$88,801.60

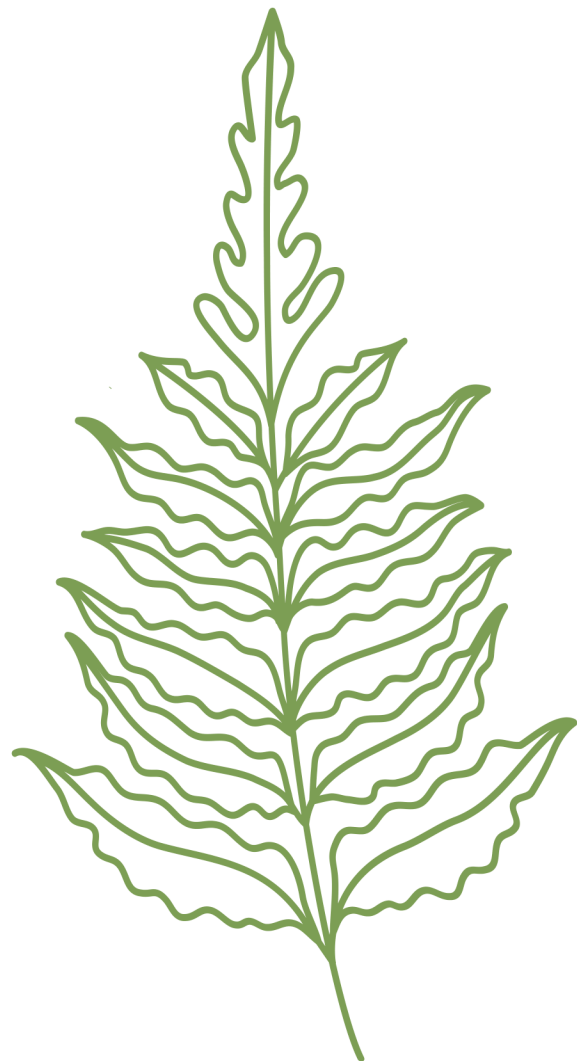
Personnel Benefits
\$272,224.78

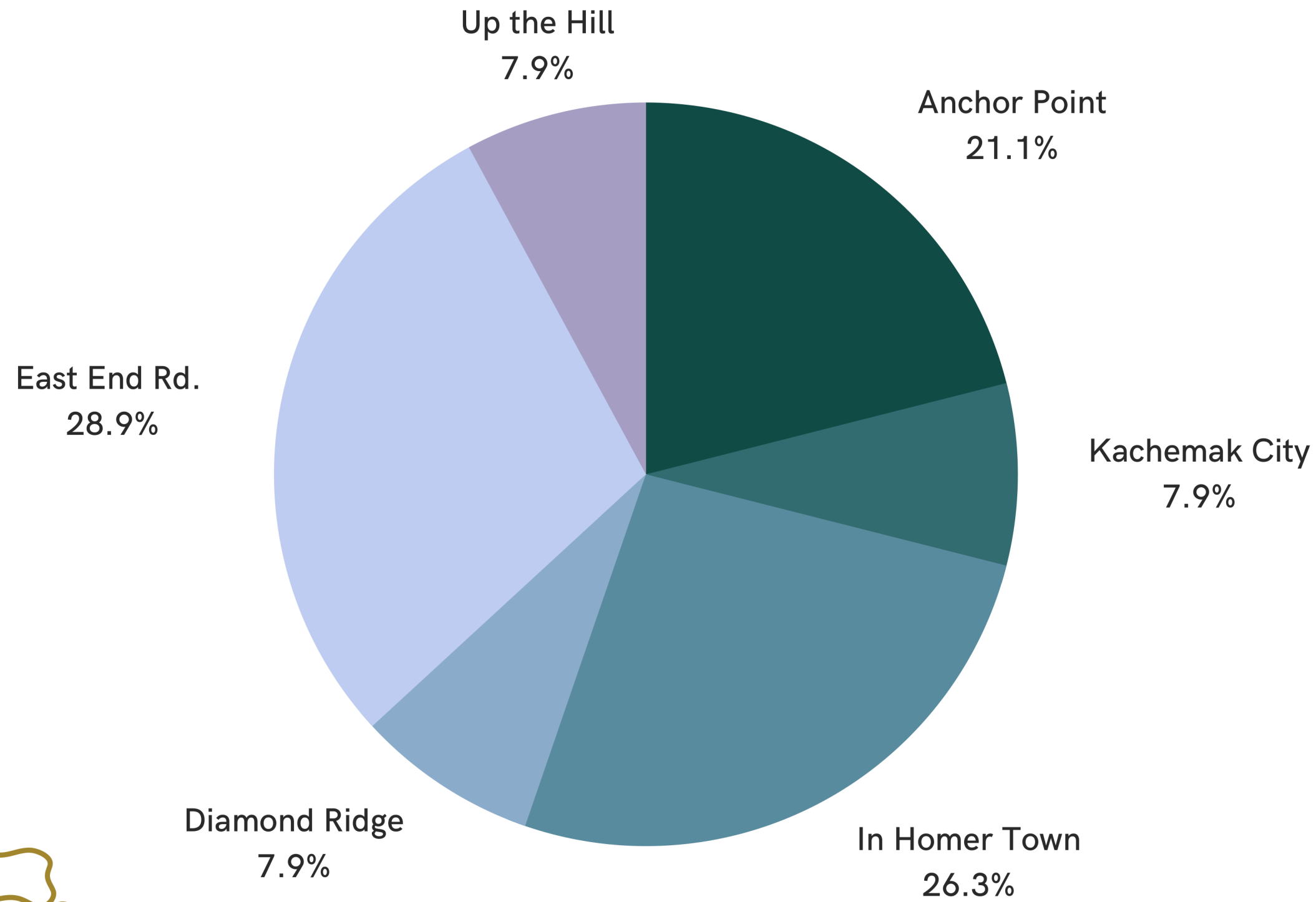
Budget Year 1

Projected BSA:
\$971,939.45

Application Overview

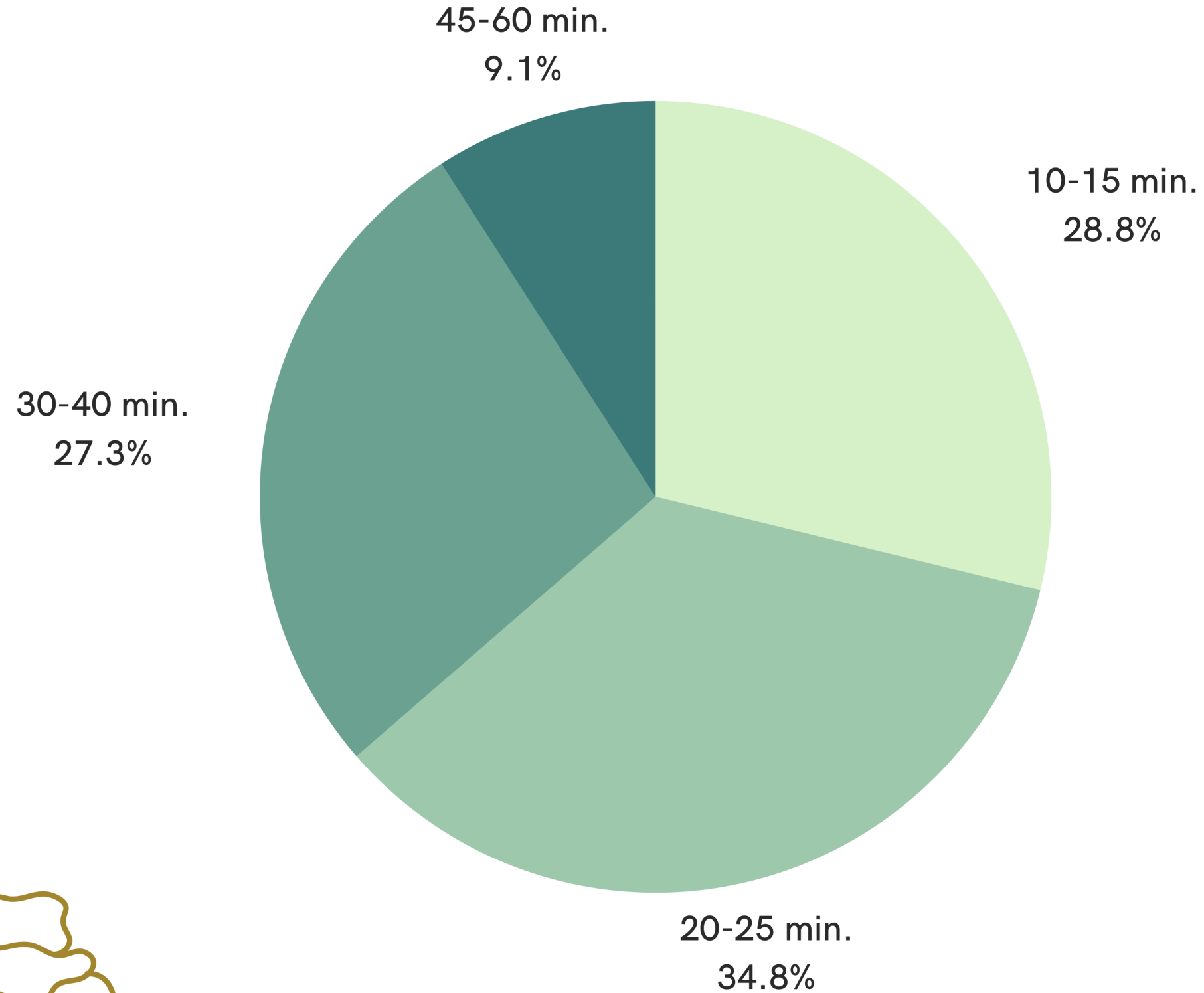
- *Section 1: Establishment of the Charter*
- *Section 2: Organization and Administration*
- *Section 3: Educational Program & Student Achievement*
- *Section 4: Professional Development*
- *Section 5: Facility*
- *Section 6: Admission*
- *Section 7: Fiscal*
- ***Section 8: Transportation***





Interest Landscape

Areas in the community that interested families reside in



Commuting Survey

How long are you willing to travel to school?

"Open", "Whatever it takes"

Bottom of East Hill to Skyline: 10 minutes

Bottom of West Hill to Skyline: 12 minutes

Bottom of Diamond Ridge to Skyline: 15 min.

Section 7

Key Points:

- KPBSD Transportation Guidelines are included as Appendix J.
- Committed to supporting families and their transportation needs by finding a solution that fits the final facility location.



December 2022

Presentation to Local School Board
Await Decision

Winter 2022

Await Decision from DEED

- Facility Planning w/ Community Partner
- Community Engagement and Events
- Principal and Staff Recruitment
- APC Board Training, Development and Strategic Planning for Year 0

March 2022

Determine SY Opening Data



Thank You!