

Redoubt Elementary

Title One Program
Supports for Family Education and
Engagement



Title I School-Wide Goal:

Social Emotional Learning



TARGET POPULATION:

PRE-K & K

- Redoubt Elementary will address Social & Emotional Development by providing an opportunity for Pre-K and Kinder parents to attend parent workshops and collaborate with teachers and parents.

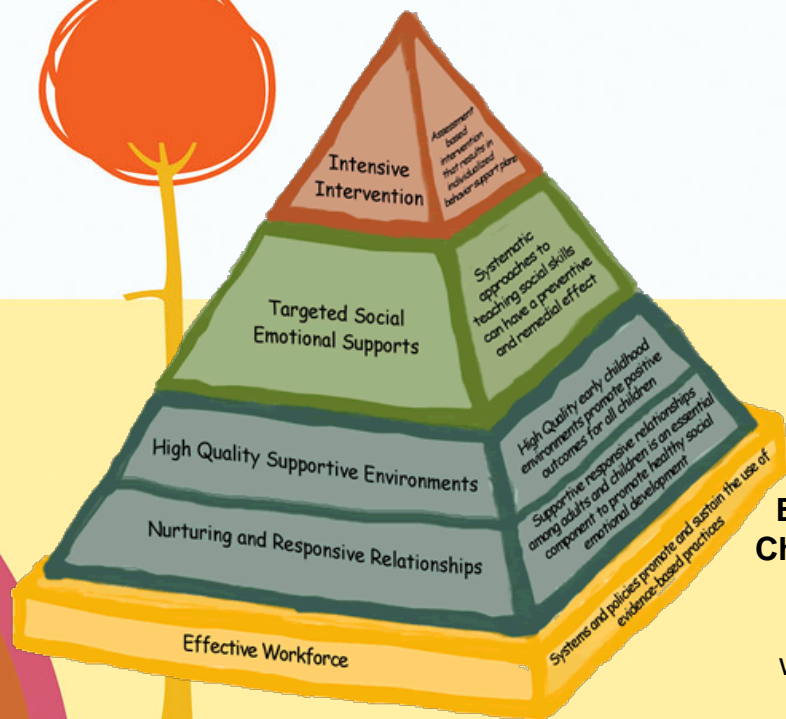
PREVENTATIVE:

EARLY INTERVENTION

- Redoubt Elementary's Title One program initiated a Positive Parenting Workshop to provide parents with opportunities to learn, collaborate, and implement strategies to support their developing child. An approach that at is

Center on the Social Emotional Foundations of Early Learning: CSEFEL

The **Center on the Social and Emotional Foundations for Early Learning (CSEFEL)** is focused on promoting the social emotional development and school readiness of young children birth to age 5. CSEFEL is a national resource center funded by the Office of Head Start and Child Care Bureau for disseminating research and evidence-based practices to early childhood programs across the country.



The **Pyramid Model for Supporting Social Emotional Competence in Infants and Young Children**. CSEFEL has developed extensive, user-friendly training materials, videos, and print resources which are available directly from this website to help early care, health and education providers implement this model.

Positive solutions for Families:

PARENT WORKSHOP
Positive Parenting Solutions
SIX | ONE HR SESSIONS



Making Connections
Importance | Benefits | Barriers



Making it Happen
Interpersonal Skills | Positive Reinforcement | Power of Play



Behavior Breakdown
Meaning Behind Behaviors | Expectations | Rule Development



Teach me What to do!
Emotional Literacy | Managing Feelings | Problem Solving



Facing the Challenge
Establishing Boundaries
Logical Consequences | Anticipating Needs
Redirection | Realistic Expectations
Presenting Choices | Positive Reinforcement | Family Routine



- Facilitators
 - Mrs. Oberts (Pre-K teacher)
 - Mrs. Nivia (School Counselor)
- Six sessions
- 2 hours each
- Every Friday
- Workbooks
- Prizes
- Light Snacks
- Presentation
- Discussion
- Practice
- Homework

Workshop Goals

RELATIONSHIPS

- Focus on Relationships
- Child/Parent
- Parent/Parent
- Family
- Parent/Child/Teacher

ENGAGE

- Provide a space and time to have authentic conversations about parenting.
- Practice Positive Parenting strategies at home.
- Problem solving & critical thinking about rules, routines, and meaning of behaviors.
- Discussions about how to discipline, play, build friendships, praise your child and manage challenging behaviors while supporting their educational and emotional development .

SUPPORT

- Families
- Parents understanding of Child Development at ages 4-5
- Importance of Social Emotional Development in Early Childhood
- Research-based practiced
- AK Early Learning Guidelines in EC/SEL



Workshop Goals

ENCOURAGE

- Build relationships with their children and other parents.

CONNECT

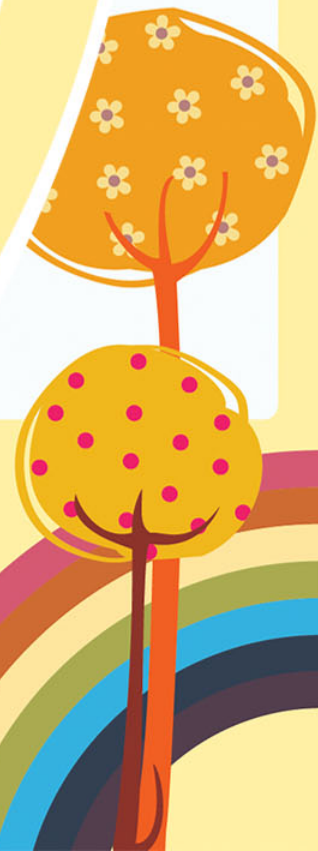
- Connect Families and Schools
 - ✓ Greater support for education
 - ✓ Greater support for schools
 - ✓ Greater support for teachers
 - ✓ Greater support for families and students

EMPOWER

- Discover new approaches to parenting
- Practice strategies
- Create new plans
- Gain Confidence
- Affirmations
- Power of positive praise
- Work together
- Resources
- Connections

ADVOCATE for EC and

REACH SCHOOL/COMMUNITY GOALS





State of Alaska Early Learning Guidelines

Children Learn Best when.....

- Children develop positive relationships with adults
- Children develop positive relationships with other children
- Children demonstrate awareness of behavior and its effects
- Children demonstrate belief in their abilities to control motivation, behavior, and social environment
- Children understand and follow rules and routines
- Children regulate their feelings and impulses
- Children appropriately express a range of emotions
- <https://www.alaskaelg.org/>

A stylized, colorful illustration of a landscape. On the left, there are two trees with orange trunks and yellow, dotted canopies. Above them is a large orange sun. A rainbow with multiple colors is visible on the left side. The background is a mix of yellow and white, with a large, flowing pink ribbon-like shape curving across the bottom half of the image.

Primary Focus for Sessions

1. Discuss the importance of positive parent/child relationships
2. Connect the power of play in parenting practice
3. Determine the meaning of behavior
4. Inform on Emotional Literacy and Problem Solving
5. Identify abilities and limitations in early childhood
6. Support Parents through Evidence Based, Best Practice
7. Provide Community and Educational Resources

Positive Relationships



Power of Praise



Power of Play

Friendship Skills



Meaning of Behaviors

- Behavior Communicates
- Expectations
- Making expectations clear
- Developing/teaching household rules
- Effective Time Outs



Emotional Literacy



- Emotional Vocabulary/Self expression
- Controlling Anger
- Handling Disappointment
- Problem Solving



Facing the Challenge



- Reasonable Expectations
- Logical consequences
- Anticipate
- Present reasonable choices
- Redirection
- If your child doesn't comply-DO-WAWP
- Catch your child

“BEING GOOD”

- Staying Calm
- Respond or ignore
- Neutral Time
- Provide encouragement

Highlights

- ❖ Thing to try at home
- ❖ Practice
- ❖ Sharing experiences
- ❖ Testimonials
- ❖ Getting Advice
- ❖ Friendships
- ❖ Connections
- ❖ ACES Overview
- ❖ Social-Emotional Development connection to Speech and Language.
- ❖ Role Playing
- ❖ Literacy Connections



Guest Speakers

- Elizabeth Sweeney
 - Speech Development
 - Milestones
 - Impact on learning
 - Limitations
 - Accommodations/Interventions
- Maureen Todd
 - Adverse Childhood Experiences
 - Trauma and the brain
 - Resilience



Parent Feedback

- 100% of parents reported they were satisfied with the workshop.
- 100% reported they would attend more workshops like this in the future.
- 100% of parents received books, games and activities for engaging with child at home.
- Most useful topics :
 - Managing Behaviors
 - Data and Examples of Best Practice Parenting
 - Evidence Based Interventions
 - Communication
- More information on:
 - Intervention Implementation
 - Early Childhood Development –Ages and Stages
 - ACES
 - Examples, Discussion, and Application of Information





Quotes

Healthy, responsive relationships with caregivers can literally shape the architecture of a young brain, laying a solid foundation for long term-physical and mental health.

National Scientific Council on the Developing Child, "The science of Early childhood Development: Closing the Gap Between what we Know and What we do," 2007

Programs that support and encourage caregivers to interact and play in healthy and stimulating ways with their young children can improve children's cognitive development.

Abdul Latif Jameel Poverty Action Lab, "Encouraging early childhood stimulation from parents and caregivers to improve child development," 2020

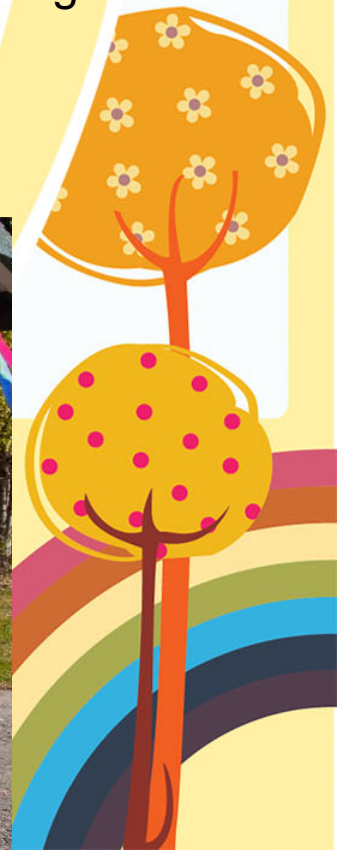
ECD programs that support caregivers in forming nurturing relationships with their children can mitigate some of the negative effects of toxic stress.

Theirworld, "Ensuring Quality Early Childhood Educational to Refugee Children: A new approach to Teacher Professional development.."



Impact on Child's Educational Journey

By providing parents with the information, resources and tools to support their child's Social and Emotional Development, we are increasing the opportunities for educational growth and learning at school and home. These experiences will impact a child throughout their lifespan, helping our families and students thrive and becoming contributing members of our society.



Future Of Parent Workshops



Levels of support:

- Federal-Title One Program
- School- Goal
- Pre-K and Kinder programs promoting and advertising, recruiting
- Community support- Guest speakers and Professional experts
- Parent and Family

Possibilities:

- Expansion to other Grades and Schools
- Include additional school district resources and staff
- Request Community resources and programs to present
- Additional sessions for parent forum discussions

○ Parent Testimony





Thank You!



Questions

