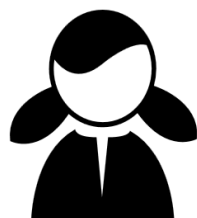


# WHO ARE KPBSD'S CTE STUDENTS?

2023-2024 DISTRICT-WIDE AVERAGES



**41%**

Of CTE participants are female

**34%** Are NTO\*

**31%** Are economically disadvantaged

**17%** Are disabled

**8%** Are migrant

**3%** Are English Learners

\* Nontraditional Occupations

## DEMOGRAPHICS



👤 Caucasian— 70.6%; 
 👤 Two or more races—14.6%; 
 👤 Alaska Native—7.2%; 
 👤 Hispanic—5.9%; 
 👤 Asian—0.9%; 
 👤 Black—0.7%; 
 👤 Pacific Islander—0.1%

## CTE ON THE KENAI



**98% GRADUATION**

4-year cohort CTE concentrators<sup>‡</sup>. Concentration in a CTE pathway is associated with high-rates of HS graduation.

<sup>‡</sup> Students with  $\geq 2.0$  HS CTE credits



**30%**

Graduates are CTE concentrators

**66%**

Of CTE concentrators go on to postsecondary, adv. training, the military, or employment.



**57%**

Of students took at least one CTE class in high school