

Kenai
Peninsula
Borough
School District

Clayton Holland

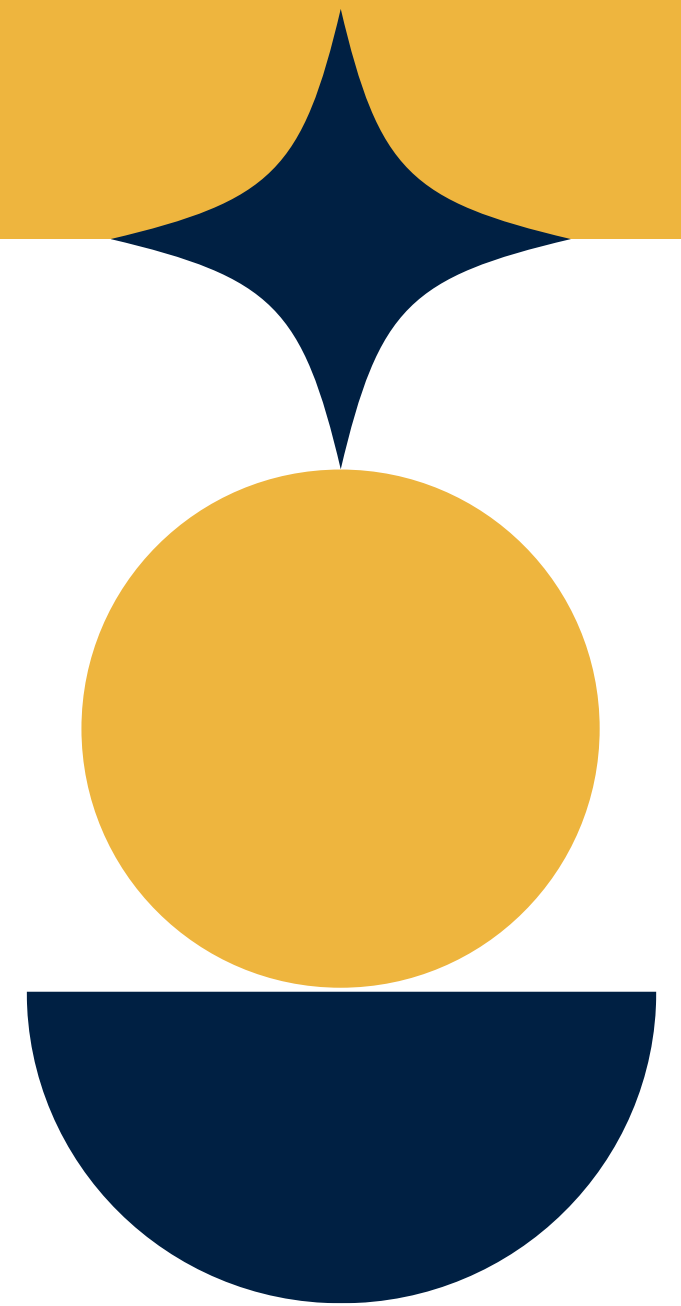
Superintendent's
Report

February 2, 2026



KPBSD Core Values

- Community
- Perseverance
- Academic Excellence
- Integrity



KPBSD Strategic Plan

District Priorities

Student Success

Literacy & math growth
CTE course attainment
College credits earned

Family & Community Engagement

Strong communication
Family involvement
Business partnerships

School Climate & Safety

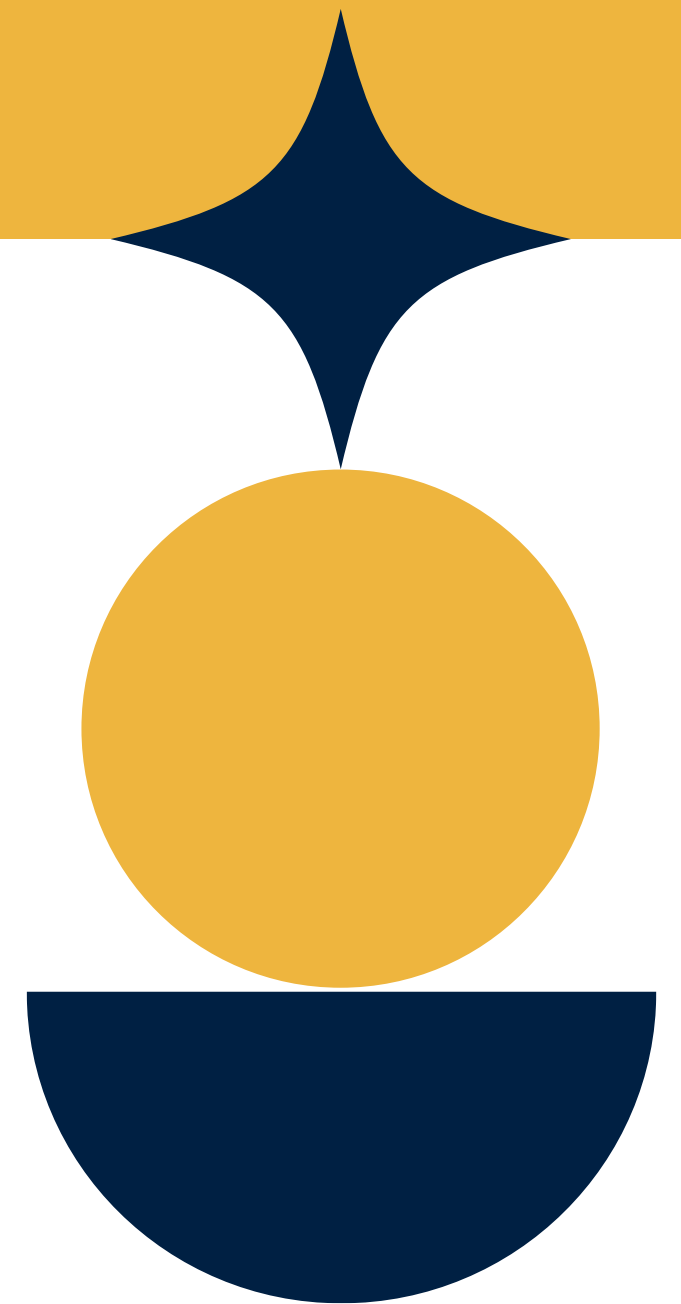
Sense of belonging
Safe, secure schools

Workforce Development

Onboarding improvements
Staff retention focus

Organizational & Resource Management

Align funding to goals
Train-the-trainer PD
Grant committee
Capital improvement process



Celebrations



**Kyle
Schneider**

NFHS Outstanding Music
Educator for the State of
Alaska



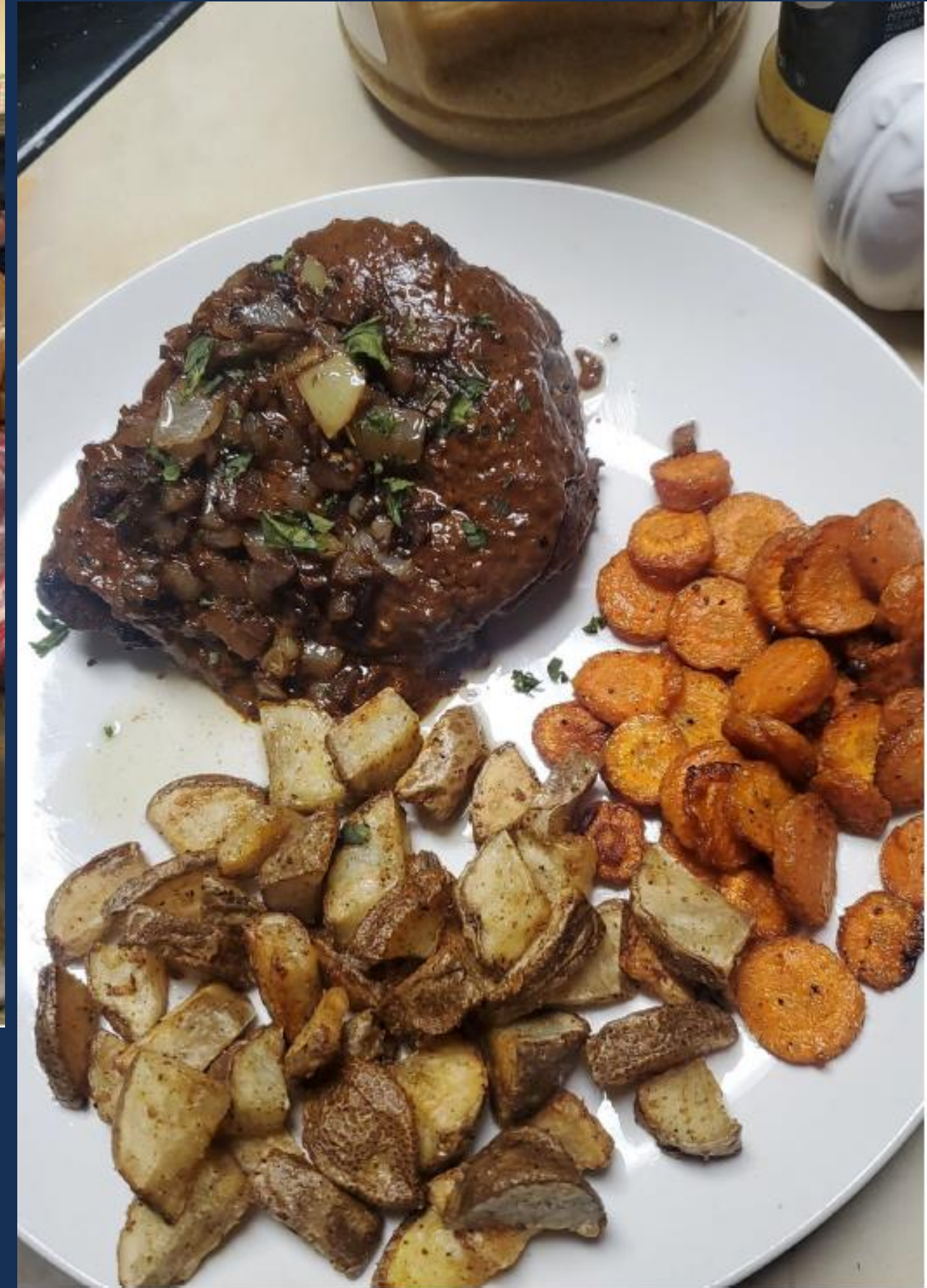


2026-2027 Student Advisor to the State of
Alaska School Board

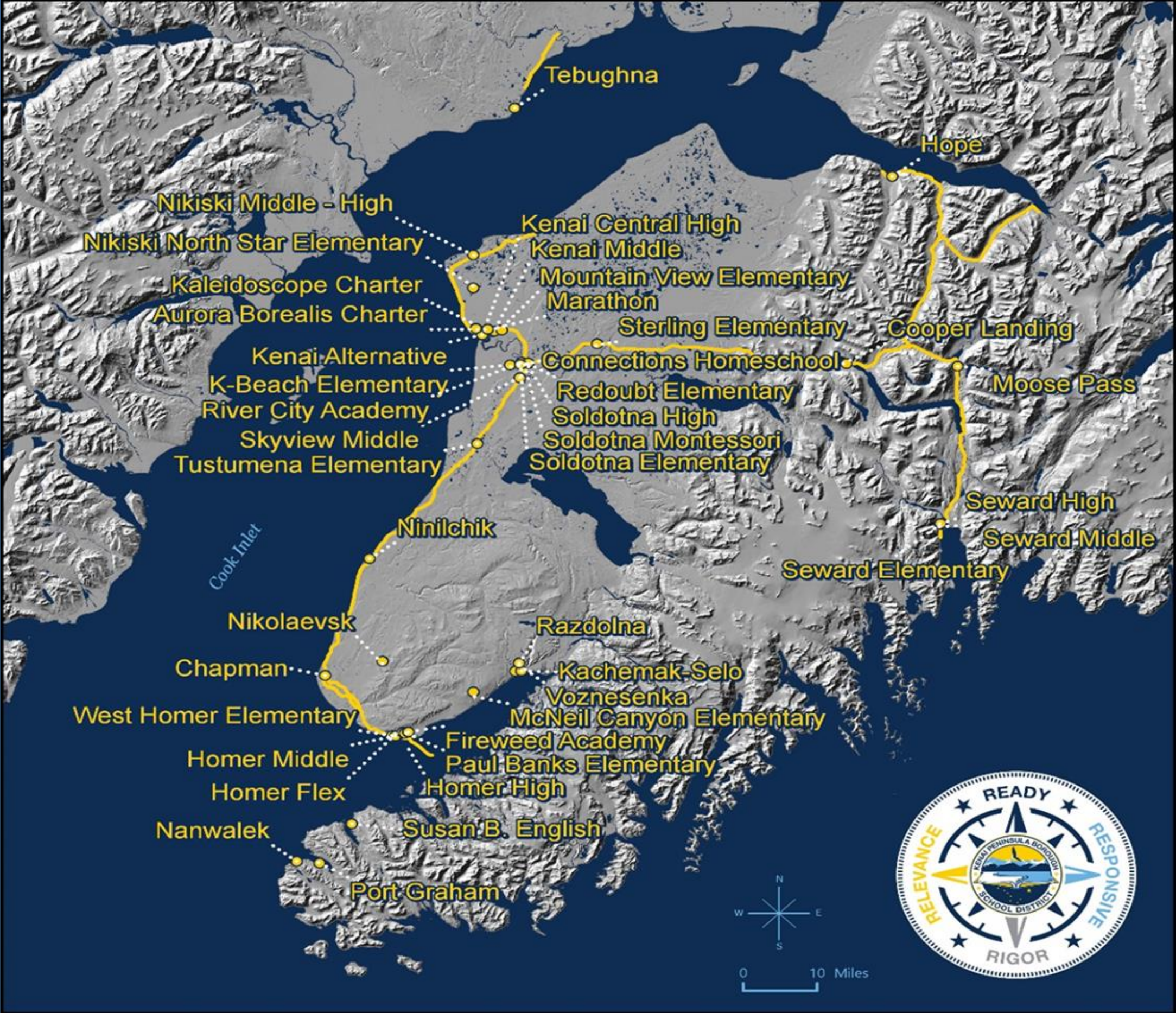


**Joshua
Bolling
Cornilles,
KCHS**









FY27 Preliminary General Fund Budget – State of Alaska Revenue

	FY26 Budget	FY27 Preliminary	Difference between FY26 and FY27
State of Alaska Foundation Funding	\$76,351,095	\$71,827,973	-\$4,523,122
State of Alaska Quality Schools	268,803	266,597	-2,206
State of Alaska One – Time payment	-	-	-
Total	\$76,619,898	\$72,094,570	-\$4,525,328

FY27 Preliminary General Fund Budget – KPB Revenue

	FY26 Budget	FY27 KPB Projected	Difference between FY26 and FY27
KPB Appropriation	\$46,878,229	\$43,594,014	-\$3,284,215
KPB In-Kind	15,480,851	15,480,851	-
Total	\$62,359,080	\$59,074,865	-\$3,284,215

- KPB FY27 maximum allowable appropriation is \$68,685,024, shifting more of the costs of education from the State to the Borough.

FY27 Preliminary
General Fund Budget – Revenue
State of Alaska and KPB

	FY26 Budget	FY27 Preliminary	Difference between FY26 and FY27
State Of Alaska	\$76,619,898	\$72,094,570	-\$4,525,328
Kenai Peninsula Borough	62,359,080	59,074,865	-3,284,215
State of Alaska and KPB Revenues	\$138,978,978	\$131,169,435	-\$7,809,543

FY27 Preliminary Revenue Budget Notes

- For FY27, the Kenai Peninsula Borough's required local contribution increased by \$3.6M due to the growth in the full and true value of taxable real and personal property. This increase results in a corresponding reduction in State of Alaska Foundation funding, shifting more of the costs of education from the State to the Borough.
- For FY27, District Administration has budgeted Borough support to KPBSD at \$59,074,865, based on projected Borough funding. This represents a 5.27% decrease from the actual FY26 KPB appropriation. The maximum level of support the Borough may provide to the District in FY27 is \$68,685,024, resulting in an additional allowable funding capacity of \$9,610,159 above the budgeted level.

FY 27 Budget Development

- **KPBSD Budget Meetings:** Community Budget meetings have been scheduled with the dates listed below:
 - 2/10/26 Homer High School Library at 6 pm
 - 2/17/26 Kenai Central High School Library at 6 pm
 - 2/18/26 Seward High School Library at 6 pm

Thank you

