



CTE Inspiring Students.
Building Skills.

Agenda:

- **Overview of College and Career Readiness Projects**
- **Dual Credit Obtainment**
- **Industry Certifications Earned**
- **On Track credits**





ADVISORY COMMITTEE

Overview of CTE:

- **Represent** stakeholders, business, industry, parents, students, school board members, legislators, Indigenous people groups, administration, educators, post-secondary partners, & special populations.
- **Review** current CTE program data across KPBSD
- **Advise** on current needs & trends across the borough, state & nation
- **Promote** CTE opportunities & bring forward partnerships

Current CTAC Advisory Committee Members 2025-26

Needs:

Student Reps - Small School / CTE Student / STUCO Rep /
Additional Industry Rep Ideas: Healthcare & Petroleum

Meets twice each year -

- Fall review of previous year data & goal setting.
- Spring - new ideas/initiatives & feedback for next year

Next meeting is April 10, 2026 - 12:00 pm - 4pm

- In Person - Tour of SOHI programs 12-1pm
- In-person or ZOOM Meeting 1:30-4pm - KCHS Workforce Development building



CTE Inspiring Students.
Building Skills.

ADVISORY COMMITTEE

Data Review: Student Performance

Who are Kenai's CTE Students? 2024-2025 DISTRICT AVERAGES

 **44.5%**

Female CTE Participants

32.3%
Economically
Disadvantaged

30.4%
Nontraditional
Occupations

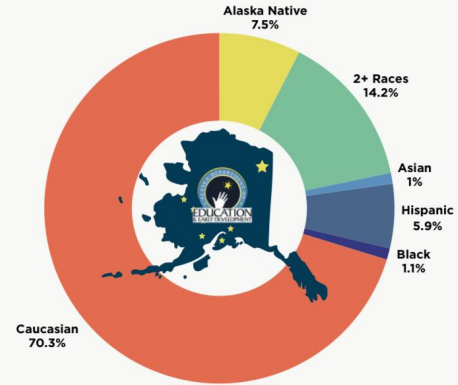
17.8%
Disabled

8.4%
Migrant Ed

2.9%
English Language
Learners

Demographics

- Alaska Native
- 2+ Races
- Asian
- Hispanic
- Black
- Caucasian



97%

Graduation rate of 4-year cohort CTE concentrators*. Concentration in a CTE pathway is associated with high rates of HS graduation.

*Students with ≥ 2.0 CTE credits

67%

Students took at least one CTE class in high school



33.3%

KPBSD graduates are CTE concentrators



74.8%

CTE Concentrators go on to postsecondary education, advanced training, or employment.

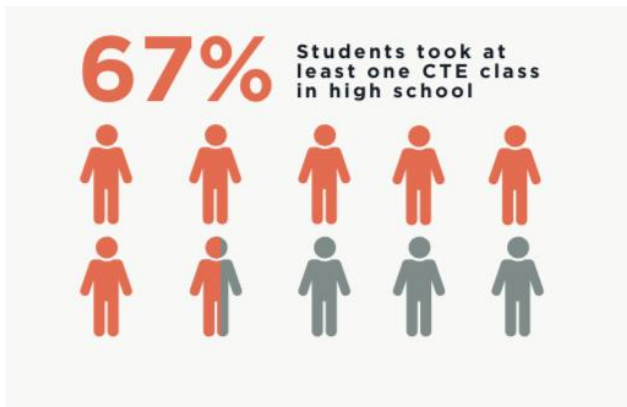


Data Review: Student Performance



Reminder - These numbers are based on graduating seniors who took Perkins State approved CTE courses.

For example: Medical Terminology, EMT and CNA are classes in the medical pathway. Anatomy & Physiology counts as science credit and isn't included in these numbers even if a student is taking A&P with a plan to go into Medicine





Data Review: Student Performance

Reminder - These numbers are based on graduating seniors who took Perkins State approved CTE courses.

A CTE Concentrator is a student who has taken 2 or more Approved CTE classes in a pathway.

Medical Terminology + CNA

74.8%

CTE Concentrators go on to postsecondary education, advanced training, or employment.





Inspiring Students.
Building Skills.

2025-26 Updates:

- **Dual Enrollment** agreement articulation in progress with AVTEC & UA system
- **KPEDD / AVTEC & City of Kenai** working on Pipeline to Pipeline project grant
- **KPC CTE Grant** - 3 year grant provides advising and funding for dual enrollment CTE classes at KPC

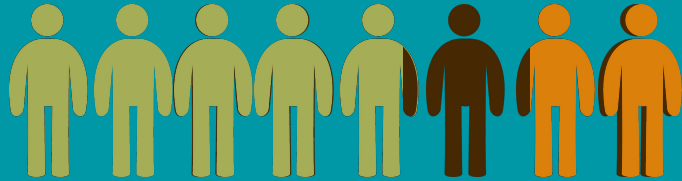
State Approved CTE Course List: [HERE](#)



Current Opportunities!

[List HERE](#)

- **Spring CNA @ KPC & KBC** - 13 students enrolled in CNA - Fridays 8-5pm + 2 Week Practicum
- **EMT Courses** - Explorer Program @ local fire stations - Earn HS Credit for ETT & FF1
 - EMT - KPC & Dual Credit - 4 students in Fall & 6 in Spring EMT - M-R 8:30-11am
- **CTE Intensives / Camp**
 - **AHEC** - Alaska Health Education Center CTEP Program - Intro to Health Careers
 - Soldotna / Homer & Seward - 46 students earned college & hs credit + CPR/1st aid certification
- **KPC** - Welding, Process Tech, CNA, Business classes - over 100 students enrolled in Spring 26 & utilized CTE funding for credits
- **AVTEC:**
 - Port Partners Intro to Business Class - students earn UA dual credit and compete for a Royal Caribbean business grant
 - **Seward Welding Class** - Ready for Fall 26 / No Spring students enrolled
- **KPBSD iChoice: Current Offerings**
 - Computer Sciences: keyboarding
 - Intro to Education (EdRising)
 - Employability Skills
 - Personal Finance



Enrollment:

Current Enrollment:

2025-26 Numbers: 63 students / 1059 credits

Current MOA with KPC up to 150 students Districtwide.

Fall 2025:

43 Enrolled / 328 credits/ 115 classes

- Returning seniors
- Did not enroll new students in Fall 25 due to financial uncertainty & reduction to KPMC funding.

Spring 2026:

63 Enrolled / 453 credits/ 149 classes

- 25 NEW students (from Fall waitlist - don't open new applications)
- Additional 25 CTE students covered by KPC Perkins grant & KPBSD CTE grant funding

**KPC had 200+ Dual Enrollment students each semester including Middle College, JumpStart and CTE & homeschool funded students (KPBSD and Non-KPBSD).



Inspiring Students.
Building Skills.

State Approved CTE Course List: [HERE](#)

2025-26 CTE Certifications:

of CTE Certifications: 182

**Most CTE Certifications are reported at the end of the year. Current certifications reported are S1 Food Worker Cards, ETT & CPR/1st Aid.

Razdolna is the FIRST school to have students complete the Yamaha ITOS Certification!

We are in the process of planning a certification week in May with opportunities for Seniors to earn certifications in welding/ healthcare & small engines

On Track Credits by grade:

Target credit by the end of the year:

- 9th grade - 6 - 7 credits
- 10th grade - 12 - 14 credits
- 11th grade - 18 - 21 credits
- 12th grade - 22+ credits

A student with a full schedule of 7 classes/day could complete all graduation requirements by 1st semester senior year (without any dual credit/additional courses). A student who completes 2 additional credits or dual credit could meet all requirements at an accelerated rate.

On Track Credits by grade:

Breakdown by grade of students in traditional brick and mortar schools
Connections, Homer Flex, Kenai Alt are excluded in this dataset due to
their unique schedules.

Grade Level <input type="text"/>	Behind on Credits	# Students	Pct
9	68	551	12.34%
10	67	489	13.70%
11	46	487	9.45%
12	55	477	11.53%
Grand Total	236	2004	11.78%



THANK YOU FOR YOUR SUPPORT!

QUESTIONS?!

